

Installation materials buyers guide

Get it right first time



Get it right, first time.

The Schneider Electric brand is synonymous with quality and efficiency. Products are manufactured under the most stringent control systems in full accordance with the latest requirements and are used in some of the most extreme conditions and applications.

With our solutions capable of withstanding rigorous demands, you can be reassured that you are specifying components that will last for years to come.

With Schneider Electric, get it right, first time.

Thorsman and Tower are now Schneider Electric

We are changing our brand names and becoming one Schneider Electric . You'll get the same great quality products, but from one name you can trust.

Only the product packaging will change - All other specifications will remain the same. In addition we have not only changed, but also improved the packaging and labelling design for easier use.

Contents

Plugs and fixings

Wall plugs.....	5	Metal & nylon cavity fixings - TPD.....	6
Frame fixings - TFF.....	5	Platti plugs - TPP.....	7
Hammer fixings - THI.....	5	Duo max - TSP.....	7
Nylon wall plugs - TNP.....	6	Spring toggles - TOG.....	7
Nylon window frame anchors - TNW.....	6	Hollow wall anchors - TMX.....	7

Foam, adhesive and anchors

Expanding foam.....	8	Sealants, adhesive, fillers.....	9
Gap filling adhesive.....	8		

Anchors

Stud bolts.....	10	Shield anchor projection bolts.....	12
Sleeve anchors.....	10	Shield anchor loose bolts.....	12
Wedge anchors.....	10	Shield anchors.....	12
Through bolts.....	11	Hooks & eyes.....	12

Screw fixings

Twin thread woodscrews.....	13	Self drilling drywall screws.....	21
Hi-Tech chipboard screws.....	15	Collated drywall screws.....	22
Combi roundhead screws.....	16	Collated chipboard screws.....	22
Black finish slotted woodscrews.....	16	Steel to steel self drilling screws.....	22
Stainless steel screws.....	17	High thread screws.....	22
Decking screws.....	17	Washerless steel to steel screws.....	23
Wood screws - round head.....	17	Loose washers.....	23
Self tapping screws.....	18	General purpose steel to steel screws.....	23
Carcass screws.....	18	Reduced point stitching screws.....	23
Brass woodscrews.....	18	Gash point screws.....	24
Brass roundheaded slotted woodscrews.....	19	5/16" Hex head cover caps.....	24
Brass pan head machine screws.....	19	Magnetic sockets.....	24
Raised head machine screws.....	20	Timber to steel self drilling screws.....	24
Roofing nuts & bolts.....	20	Masonry screws.....	25
Penny washers.....	20	Drill bits.....	25
Drywall screws.....	21		

Nails and pins

Plastic headed pins & nails.....	26	Capping nails.....	27
Masonry nails.....	26	Dome head nails.....	27

Rivets and ties

Aluminium domed head steel mandrel rivets.....	28	Cable ties - TCT.....	29
Aluminium large head steel mandrel rivets.....	28	Cable tie plug.....	29
Plated steel domed head steel mandrel rivets.....	28		

Fixing bands and grommets

Fixing bands.....	30	Compression grommets - TET.....	30
PVC cable grommets.....	30		

Cable fixings	
Cable clips premium - TC	31
Cable clips standard - TCA	32
Tower round plus clips	32
Tower round plus clips - red	32
Tower flat plus clips	33
Tower TV Clips	33
Tower flat clips - parallel twin	33
Tower flat clips - twin and earth	34
Flat clips - three core and earth	34
Flat clips - double	34
Tower cable clips - round	34
Tower pin plugs	35
Tower LSF clips	35
Tower self adhesive clips	35
Connectors and Earth clamps	
Terminal connectors	36
Chocbox	36
Earth clamps	36
Tapes	
PVC insulation tape	37
Specialist tapes	37
PVC sleeving	38
Cable tidy	38
Hand tools	
TorqueVario-S VDE Screwdriver kit	39
Electrical hand tools	39
Re-threading tools	40
General electricians tools	40
Tool sets	40
Hammers	40
Tape measures	41
Knives	41
Saws, hacksaws and blades	41
Chisels	41
Optime Cable tacker & staples	42
Plumbing tools	42
Tubs and fixings cases	
Thorsman trade tubs	43
Tower trade tubs	43
Fixing cases	43
Safety equipment	
Head protection	44
Respiratory protection	44
Eye protection	44
Hearing protection	44
Hand protection	44
General items	44
Site power	
Site power	45
Cable reels & trailing leads	45
Cable reel cut out range	45
Worklights	
Worklights	46
Power tool accessories	
Screwdriver bits	47
Standard masonry drill bits - TBE	47
SDS plus drill long series	47
Long series masonry bits	48
SDS plus chisels	48
Hammer SDS plus bit - THB	48
High speed steel rolled flute drill - tube packed... ..	49
Imperial jobber drill	50
High speed steel rolled flute drill - long series	50
High speed steel rolled flute - drill sets	50
High speed steel ground flute drills long series	50
High speed steel ground flute drills long series	51
Auger bits	51
Flat bits	51
Step & Taper drills	51
Power tool and pipe accessories	
Holesaws	52
Arbors	52
Electricians box sinker	53
Diamond cores	53
Pipe clips	53
Pipe trunking - type TRL	54
Electrical testing	
Test meters	55
Detectors	55
Power testers	55
Multi testers	56
Damp testers	56

Plugs and fixings

Wall plugs - TP



Article No.	Description	Pack Quantity	Minimum Order Unit
1001007	TP 1 Yellow	100	1,000
1003003	TP 2 Red	100	1,000
1005008	TP 2B Brown	100	1,000
1006006	TP 3 Blue	100	1,000
1007004	TP 4 Green	100	1,000

- Supplied on a sprue of 10, boxed in 100's
- Dual expansion giving high load values
- Full colour coded range
- Singles and bulk packs available

Wall plugs economy - TPA supplied loose



Article No.	Description	Pack Quantity	Minimum Order Unit
1090600	TPA 1 Yellow	100	1,000
1090605	TPA 2 Red	100	1,000
1090610	TPA 2B Brown	100	1,000
1090615	TPA 3 Blue	100	1,000

- Boxed in 100's
- Shrink wrapped in 1000's
- Pallet quantities available
- Plain white boxes

Wall plugs economy - TPA bulk supplied loose



Article No.	Description	Pack Quantity	Minimum Order Unit
1090720	TPA 2 Red	100	25,000
1090725	TPA 2B Brown	100	20,000

- Shrink wrapped in 1000's
- Carton quantities only - minimum order 10,000 mixed
- Plain white boxes

Frame fixings - TFF



Article No.	Description	Pack Quantity	Minimum Order Unit
1130110	8 x 80mm	100	100
1130115	8 x 100mm	100	100
1130120	8 x 120mm	100	100
1130155	10 x 80mm	50	50
1130160	10 x 100mm	50	50
1130165	10 x 120mm	50	50
1130170	10 x 140mm	50	50
1130175	10 x 160mm	50	50

- For through fixing installations such as doors and window frames, trunking, switches and battens
- Fast installation
- Powerful expansion

Hammer fixings - THI



Article No.	Description	Pack Quantity	Minimum Order Unit
1131110	5 x 30mm	100	100
1131115	5 x 50mm	100	100
1131130	6 x 35mm	100	100
1131135	6 x 50mm	100	100
1131140	6 x 60mm	100	100
1131145	6 x 70mm	100	100
1131160	8 x 60mm	100	100
1131165	8 x 80mm	100	100
1131170	8 x 100mm	100	100
1131175	8 x 120mm	100	100
1131180	8 x 140mm	100	100

- Hammer in fixing for fast installation into a wide variety of materials
- Knock-in protection prevents premature expansion during installations
- High load values

Plugs and fixings

Nylon wall plugs - TNP



Article No.	Description	Pack Quantity	Minimum Order Unit
1060030	TNP 6 x 30mm	100	100
1060040	TNP 7 x 35mm	100	100
1060050	TNP 8 x 40mm	100	100
1060060	TNP 10 x 50mm	50	50
1060070	TNP 12 x 60mm	25	25
1060080	TNP 14 x 70mm	20	20

- Suitable for concrete, stone, lightweight concrete, hollow block brick and plasterboard
- High load values
- Easy to install

Nylon window frame anchors - TNW



Article No.	Description	Pack Quantity	Minimum Order Unit
1501610	8 x 100mm	100	100
1501615	8 x 140mm	100	100
1501630	10 x 75mm	100	100
1501635	10 x 100mm	100	100
1501640	10 x 120mm	100	100
1501645	10 x 140mm	100	100
1501650	10 x 165mm	100	100

- Suitable for the installation of uPVC, aluminium and wooden window frames and doors
- High grade nylon sleeve and zinc plated screw prevents corrosion
- Complete with cover cap
- GRP expansion wedge

Metal and nylon cavity fixings - TPD



Article No.	Description	Pack Quantity	Minimum Order Unit
1220010	TPD Nylon Driva	100	100
1220104	TPD Metal	100	100
1220120	TPD Metal Driva	25	25
49TFM100	Zinc Alloy Cavity Fixing	100	1 box

- Ideal for light installations in plasterboard
- Supplied complete with screw
- Self-drilling design for easy installation

Plugs and fixings

Platti plugs - TPP



Article No.	Description	Pack Quantity	Minimum Order Unit
1200005	10 x M4S	100	100
1200203	10 x M4K	100	100
1200401	13 x M5S	100	100
1200443	13 PLUG	1,000	1,000

- Suitable for a range of plasterboard thicknesses
- A captive fixing - even without screw
- All metal construction
- High load values

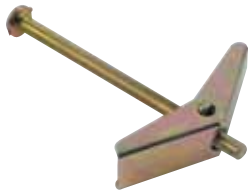
Duo max - TSP



Article No.	Description	Pack Quantity	Minimum Order Unit
1240001	6 x 50	25	25
1248004	10 x 65	25	25
1249002	10 x 75	25	25

- Suitable for a range of plasterboard thicknesses
- A captive fixing - even without screw
- Corrosion resistant
- High load values

Spring toggles - TOG



Article No.	Description	Pack Quantity	Minimum Order Unit
1208016	10 M3 x 50	50	50
1208057	15 M5 x 50	50	50
1208060	15L M5 x 80	50	50

- Ideal for overhead cavity fixing
- Spreads loads over a wide area
- Easy installation
- Economical

Hollow wall anchors - TMX



Article No.	Description	Sheet Thickness	Screw Length	Pack Quantity	Minimum Order Unit
1260025	4E (409)	5-15mm	40mm	100	100
1260066	4D (423)	16-26mm	50mm	50	50
1260130	5M (510)	6-13mm	38mm	50	50
1260108	5E (514)	3-16mm	57mm	50	50
1260124	5D (527)	12-32mm	70mm	50	50
1260140	6E (614)	3-16mm	57mm	50	50
1260165	6D (627)	23-32mm	70mm	50	50
1265040	TOOL			1	1

- Ideal for overhead cavity fixing
- Available to suit a wide range of plasterboard thicknesses
- Calibrated legs spread the load and give a fully captive fixing
- All metal fire resistant fixing
- Mounting tool for expanding

Foam and adhesive

Expanding foam



Article No.	Description	Pack Quantity	Minimum Order Unit
1520002	Multi-purpose hand held 500ml	12	12
1520005	Multi-purpose hand held 750ml	12	12
1520030	Multi-purpose fire rated 750ml	12	12

- Ideal for filling large or irregular gaps
- Suitable for gun application or hand held
- Expands to at least 30 times its original volume
- Fire rated product approved to BS 476 (part 20) up to 2 hour protection

Gap filling adhesive



Article No.	Description	Pack Quantity	Minimum Order Unit
1520200	Multi-purpose gap filling adhesive 295ml	12	12
1520060	Dispensing gun for 150ml and 300ml	1	1

- Multi use solvent free gap filling adhesive

Sealants and fillers

Sealants and fillers



Product Code	Colour	Size	Pack Quantity
Towerfill			
69FILL12	White	295ml cartridge	12
Towerfire			
69FIRE12	White	295ml cartridge	12
Towerseal			
69SEAL12	White	295ml cartridge	12
69SEALC12	Clear	295ml cartridge	12
Dispensing gun			
1520060		For 150ml & 300ml cartridges	1

Towerfill

- Universal decorators caulk, permanently flexible white acrylic filler that is mould resistant. Fast and easy to use flexible acrylic for gap and crack filling. Can be overpainted after one hour. Suitable for pointing around door/window frames, sealing cracks between walls and skirting boards, filling areas around cornices and architraves and for sealing small movement joints in masonry.

Towerfire

- Low Smoke Intumescent Acrylic Sealant, maintains joint integrity for up to 4 hours in a fire. Suitable for sealing holes through internal partitions and walls, sealing between fire door frames and fire rated walls, for lap and infill joints in fire rated cladding and internal fire check glazing. Towerfire sealant can be overpainted when fully dried.

Towerseal

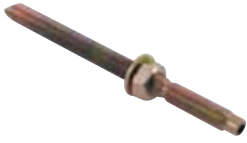
- A multi purpose mould resistant silicone sealant which forms a flexible and durable weather tight seal. Ideal for electrical conduits, glazing, roofing, woodworking, decorating and masonry, flooring, heating & ventilation, ceramic tiling and boat maintenance. UV stabilised.

Cartridge gun

- Universal cartridge gun.

Anchors

Stud bolts



Article No.	Description	Pack Quantity	Minimum Order Unit
1520302	M12 x 160	10	10
1520303	M16 x 190	10	10
1520304	M20 x 260	10	10

- Manufactured from 5.6 grade steel
- Supplied with hexagon driving key
- Yellow passivated finish

Sleeve anchors



Article No.	Description	Pack Quantity	Minimum Order Unit
Standard type			
1501500	8 x 40	100	100
1501506	8 x 65	100	100
1501510	8 x 85	100	100
1501520	10 x 50	100	100
1501526	10 x 80	50	50
1501530	10 x 97	50	50
1501540	12 x 60	50	50
1501546	12 x 75	50	50
1501550	12 x 99	30	30
1501556	12 x 129	30	30
1501560	16 x 65	20	20
1501566	16 x 111	20	20
1501570	16 x 147	15	15
Hexagonal head type			
1501035	10 x 80	50	50
1501040	10 x 100	50	50
1501050	12 x 60	50	50

- Suitable for fixing into concrete, brick, stone and dense concrete blocks
- Quick and easy through-fixing installation
- Available in standard nut or bolt head types

Wedge anchors



Article No.	Description	Pack Quantity	Minimum Order Unit
2810109	Wedge anchor M6 x 25	100	100
2810125	Wedge anchor M8 x 30	100	100
2810141	Wedge anchor M10 x 40	50	50
2810166	Wedge anchor M12 x 50	50	50
2810182	Wedge anchor M16 x 60	25	25
2810901	Setting tool M6	1	1
2810927	Setting tool M8	1	1
2810943	Setting tool M10	1	1

- Suitable for concrete, stone, solid brick and blocks
- Economical with simple hammer in installation
- Captive wedge is ideal for overhead work

Anchors

Through bolts



Article No.	Description	Pack Quantity	Minimum Order Unit
Electro-plated zinc			
IMT38005	M6 X 40	100	100
IMT38006	M6 X 70	100	100
IMT38007	M8 X 50	100	100
IMT38008	M8 X 95	50	50
IMT38009	M10 X 60	50	50
IMT38010	M10 X 105	25	25
IMT38011	M12 X 85	25	25
IMT38012	M12 X 125	25	25
Hot dipped galvanised			
IMT38013	M6 X 40	100	100
IMT38014	M6 X 70	100	100
IMT38015	M8 X 50	100	100
IMT38016	M8 X 95	50	50
IMT38017	M10 X 60	50	50
IMT38018	M10 X 105	25	25
IMT38019	M12 X 85	25	25
IMT38020	M12 X 125	25	25
Stainless Steel, acid proof			
IMT38021	M6 X 40	100	100
IMT38022	M6 X 70	100	100
IMT38023	M8 X 50	100	100
IMT38024	M8 X 95	50	50
IMT38025	M10 X 60	50	50
IMT38026	M10 X 105	25	25

- Suitable for through fixing into concrete, stone and rock
- Popular sizes have twin clip design
- Available in BZP electro-plated, hot dip galvanised or stainless steel A4

Anchors

Shield anchor projection bolts - PB



Article No.	Description	Pack Quantity	Minimum Order Unit
1511100	M6 x 65	100	100
1511103	M6 x 85	75	75
1511106	M8 x 70	50	50
1511108	M8 x 105	45	45
1511109	M8 x 120	40	40
1511110	M8 x 140	30	30
1511112	M10 x 85	30	30
1511115	M10 x 100	25	25
1511118	M10 x 130	20	20
1511120	M10 x 160	20	20
1511124	M12 x 115	20	20
1511126	M12 x 135	15	15

- For use in concrete, stone, rock and brick
- Hole tolerant, ideal for wall or overhead fixing
- All steel construction

Shield anchor loose bolts - LB



Article No.	Description	Pack Quantity	Minimum Order Unit
1511000	M6 x 50	100	100
1511003	M6 x 70	100	100
1511004	M6 x 90	80	80
1511006	M8 x 60	50	50
1511009	M8 x 80	50	50
1511012	M8 x 90	50	50
1511015	M10 x 70	30	30
1511018	M10 x 80	30	30
1511021	M10 x 100	25	25
1511022	M10 x 130	20	20
1511024	M12 x 80	20	20
1511027	M12 x 100	20	20
1511031	M12 x 110	15	15
1511 034	M12 x 130	10	10

- Ideal for fixing heavy machines, fans, industrial doors and switch gear
- Four segment shield for even expansion
- All steel construction

Shield anchors



Article No.	Description	Pack Quantity	Minimum Order Unit
1511200	M6 x 50	100	100
1511203	M8 x 55	100	100
1511206	M10 x 65	50	50
1511209	M12 x 75	25	25

- Suitable for supporting suspended ceilings, chain barriers and lighting fixings
- Hole tolerant compared with other types of anchor bolt
- All steel construction

Hooks and eyes

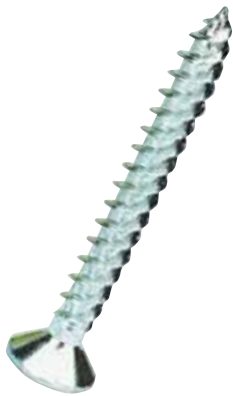


Article No.	Description	Pack Quantity	Minimum Order Unit
1511231	Hook M6	50	50
1511234	Hook M8	25	25
1511237	Hook M10	25	25
1511224	Eye M6	50	50
1511227	Eye M8	25	25
1511230	Eye M10	25	25

- Provides a secure anchorage for a variety of applications
- Includes hexagon nut and flat washer

Screw fixings

Twin thread wood screws

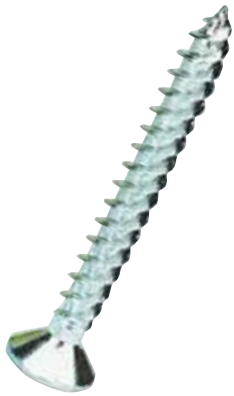


Article No.	Description	Pack Quantity	Minimum Order Unit
Countersunk Recessed Woodscrews			
3736025	4 x 1/2	200	14,800
3736032	4 x 5/8	200	14,800
3736049	4 x 3/4	200	14,800
3736056	4 x 1	200	14,800
3736070	5 x 1/2	200	14,800
3736087	5 x 5/8	200	14,800
3736117	6 x 1/2	200	14,800
3736124	6 x 5/8	200	14,800
3719172	6 x 3/4	200	14,800
3719196	6 x 1	200	14,800
3719219	6 x 1 1/4	200	11,200
3719226	6 x 1 1/2	200	6,600
3736179	6 x 1 3/4	200	6,600
3719240	6 x 2	200	4,800
3736209	7 x 3/4	200	14,800
3719301	7 x 1	200	14,800
3719318	7 x 1 1/4	200	11,200
3719325	7 x 1 1/2	200	6,600
3719349	8 x 1/2	200	14,800
3736278	8 x 5/8	200	10,000
3719363	8 x 3/4	200	14,800
3719387	8 x 1	200	11,200
3719400	8 x 1 1/4	200	6,600
3719417	8 x 1 1/2	200	6,600
3719424	8 x 1 3/4	200	4,800
3719431	8 x 2	200	4,800
3736353	8 x 2 1/4	200	3,600
3719455	8 x 2 1/2	200	3,600
3736377	8 x 3	200	3,600
3736391	10 x 3/4	200	11,200
3719509	10 x 1	200	6,600
3719516	10 x 1 1/4	200	6,600
3719523	10 x 1 1/2	200	4,800
3719530	10 x 1 3/4	200	4,800
3719547	10 x 2	200	3,600
3719554	10 x 2 1/4	100	3,600
3719561	10 x 2 1/2	100	2,400
3719585	10 x 3	100	1,800
3736476	10 x 3 1/2	100	2,400
3736483	10 x 4	200	2,400
3736506	12 x 1 1/4	200	4,800
3736513	12 x 1 1/2	100	3,000
3736520	12 x 2	100	1,500
3736537	12 x 2 1/2	100	1,500
3736544	12 x 3	100	1,500
3736551	12 x 3 1/2	100	1,500
3736568	12 x 4	100	1,800

- Suitable for wood, plastic and nylon wall plugs
- Through hardened and zinc plated finish
- Sharp gimlet point

Screw fixings

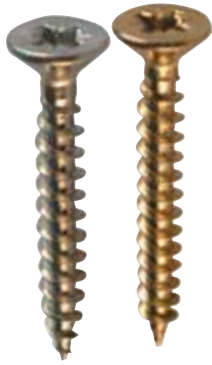
Twin thread wood screws – continued



Article No.	Imperial gauge & length	Metric gauge & length	Pack Quantity	Minimum Order Unit
Countersunk				
410506	6 x ½	3.5 x 12mm	200	6 boxes
410706	6 x ¾	3.5 x 20mm	200	6 boxes
411006	6 x 1	3.5 x 25mm	200	6 boxes
411206	6 x 1¼	3.5 x 30mm	200	6 boxes
411506	6 x 1½	3.5 x 40mm	200	9 boxes
412006	6 x 2	3.5 x 50mm	200	6 boxes
410508	8 x ½	4.0 x 12mm	200	6 boxes
415808	8 x ⅝	4.0 x 18mm	200	6 boxes
410708	8 x ¾	4.0 x 20mm	200	6 boxes
411008	8 x 1	4.0 x 25mm	200	6 boxes
411208	8 x 1¼	4.0 x 30mm	200	6 boxes
411508	8 x 1½	4.0 x 40mm	200	9 boxes
411708	8 x 1¾	4.0 x 45mm	200	6 boxes
412008	8 x 2	4.0 x 50mm	200	6 boxes
412508	8 x 2½	4.0 x 60mm	200	5 boxes
413008	8 x 3	4.0 x 80mm	200	5 boxes
411010	10 x 1	5.0 x 25mm	200	6 boxes
411210	10 x 1¼	5.0 x 30mm	200	6 boxes
411510	10 x 1½	5.0 x 40mm	200	6 boxes
411710	10 x 1¾	5.0 x 45mm	200	6 boxes
412010	10 x 2	5.0 x 50mm	200	5 boxes
412510	10 x 2½	5.0 x 60mm	200	5 boxes
413010	10 x 3	5.0 x 80mm	200	5 boxes
413510	10 x 3½	5.0 x 90mm	200	4 boxes
414010	10 x 4	5.0 x 100mm	200	4 boxes
411012	12 x 1	6.0 x 25mm	200	9 boxes
411512	12 x 1½	6.0 x 40mm	200	6 boxes
412012	12 x 2	6.0 x 50mm	200	5 boxes
412512	12 x 2½	6.0 x 60mm	200	5 boxes
413012	12 x 3	6.0 x 80mm	200	5 boxes
414012	12 x 4	6.0 x 100mm	200	4 boxes
Yellow Passivated				
3737500	7 x 1		200	10,000
3737503	7 x 1¼		200	11,200
3737502	7 x 1½		200	6,600

Screw fixings

Hi-tech chipboard screws



Article No. Yellow Passivated	Article No. Zinc Finish	Description	Imperial Equivalent	Pack Quantity	Outer Quantity
3742026	3740026	3 x 13	4 x 1/2	200	14,800
3742033		3 x 15	4 x 5/8	200	14,800
3742037		3 x 17	4 x 11/16	200	14,800
3742040	3740040	3 x 20	4 x 3/4	200	14,800
3742057		3 x 25	4 x 1	200	14,800
3742064		3 x 30	4 x 1 1/4	200	14,800
3742088	3740088	3.5 x 13	6 x 1/2	200	14,800
3742095	3740095	3.5 x 15	6 x 5/8	200	14,800
3742098		3.5 x 17	6 x 11/16	200	14,800
3742101	3740101	3.5 x 20	6 x 3/4	200	14,800
3742118	3740118	3.5 x 25	6 x 1	200	14,800
3742125	3740125	3.5 x 30	6 x 1 1/4	200	11,200
3742127		3.5 x 35	6 x 1 3/8	200	11,200
3742132	3740132	3.5 x 40	6 x 1 1/2	200	5,000
3742170	3740179	4 x 15	8 x 5/8	200	10,000
3742171		4 x 17	8 x 11/16	200	10,000
3742187	3740187	4 x 20	8 x 3/4	200	14,800
3742194	3740194	4 x 25	8 x 1	200	11,200
3742200	3740197	4 x 30	8 x 1 1/4	200	11,200
3742209	3740198	4 x 35	8 x 1 3/8	200	6,600
3742217	3740137	4 x 40	8 x 1 1/2	200	6,600
3742224	3740140	4 x 45	8 x 1 3/4	200	4,800
3742231	3740141	4 x 50	8 x 2	200	4,800
3742240	3740142	4 x 60	8 x 2 1/2	200	Please enquire
3742247	3740143	4 x 70	8 x 2 3/4	200	Please enquire
3742255		4.5 x 20	9 x 3/4	200	11,200
3742262		4.5 x 25	9 x 1	200	5,000
3742279		4.5 x 30	9 x 1 1/4	200	5,000
3742280		4.5 x 35	9 x 1 3/8	200	5,000
3742286		4.5 x 40	9 x 1 1/2	200	4,800
3742293		4.5 x 45	9 x 1 3/4	200	3,000
3742309		4.5 x 50	9 x 2	200	3,000
3742323	3740144	5 x 20	10 x 3/4	200	11,200
3742330		5 x 25	10 x 1	200	6,600
3742347	3740145	5 x 30	10 x 1 1/4	200	6,600
3742351		5 x 35	10 x 1 3/8	200	6,600
3742354	3740146	5 x 40	10 x 1 1/2	200	4,800
3742361		5 x 45	10 x 1 3/4	200	4,800
3742378	3740148	5 x 50	10 x 2	200	Please enquire
3742381		5 x 55	10 x 2 3/8	200	3,600
3742385	3740152	5 x 60	10 x 2 1/2	100	Please enquire
3742392	3740153	5 x 70	10 x 2 3/4	100	2,400
3742408	3740151	5 x 75	10 x 3	100	2,400
3742415		5 x 90	10 x 3 1/2	100	2,400
3742422	3740158	5 x 100	10 x 4	100	Please enquire
3742446		6 x 30	12 x 1 1/4	200	4,800
3742453		6 x 40	12 x 1 1/2	200	3,000
3742477		6 x 50	12 x 2	100	2,400
3742484		6 x 60	12 x 2 1/2	100	2,400
3742491		6 x 70	12 x 2 3/4	100	1,800
3742507		6 x 80	12 x 3	100	1,800
3742514		6 x 90	12 x 3 1/2	100	1,800
3742521		6 x 100	12 x 4	100	1,800

- Through hardened, zinc and yellow passivated or BZP finish
- Single thread design provides excellent holding in a variety of materials
- Wax coated to ease penetration

Screw fixings

Combi roundhead screws



Article No.	Description	Pack Quantity	Minimum Order Unit
3743182	3 x 13	200	14,800
3743183	3 x 15	200	14,800
3743184	3 x 20	200	14,800
3743185	3 x 25	200	14,800
3743368	3.5 x 13	200	14,800
3743180	3.5 x 15	200	14,800
3743192	3.5 x 20	200	14,800
3743193	3.5 x 25	200	11,200
3743194	3.5 x 30	200	5,000
3743195	3.5 x 40	200	6,600
3743187	4 x 13	200	10,000
3743188	4 x 15	200	14,800
3743190	4 x 20	200	14,800
3743191	4 x 25	200	11,200
3743207	4 x 30	200	6,600
3743215	4 x 40	200	6,600
3743220	4 x 50	200	4,800
3743222	5 x 20	200	6,600
3743337	5 x 25	200	6,600
3743344	5 x 30	200	6,600
3743351	5 x 40	200	4,800
3743360	5 x 50	200	3,600
3743365	5 x 60	100	3,600
3743366	5 x 70	100	1,800
3743367	5 x 75	100	1,800

- Available with a bright zinc plated finish on hardened steel
- Combination head can be used with slotted or pozi screwdriver
- Single thread provides excellent grip in many materials

Black finish slotted woodscrews



Article No.	Description	Pack Quantity	Minimum Order Unit
3748120	4 x 5/8	200	200
3748127	6 x 1/2	200	200
3748137	6 x 5/8	200	200
3748134	6 x 3/4	200	200
3748141	6 x 1	200	200
3748158	6 x 1 1/4	200	200
3748229	8 x 5/8	200	200
3748226	8 x 3/4	200	200
3748233	8 x 1	200	200
3748240	8 x 1 1/4	200	200
3748257	8 x 1 1/2	200	200
3748264	8 x 1 3/4	200	200
3748271	8 x 2	200	200
3748325	10 x 3/4	200	200
3748349	10 x 1 1/4	200	200
3748356	10 x 1 1/2	200	200
3748370	10 x 2	200	200

- Suitable for electrical installations and hinges or wrought iron work
- Chemical black finish

Screw fixings

Stainless steel screws



Article No.	Description	Pack Quantity	Minimum Order Unit
3743800	4 x 25mm	200	200
3743802	4 x 30mm	200	200
3743804	4 x 40mm	200	200
3743806	4 x 50mm	200	200
3743808	4 x 60mm	200	200
3743810	4 x 70mm	200	200
3743820	5 x 25mm	200	200
3743822	5 x 30mm	200	200
3743824	5 x 40mm	200	200
3743826	5 x 50mm	200	200
3743828	5 x 60mm	100	100
3743830	5 x 70mm	100	100
3743832	5 x 80mm	100	100
3743834	5 x 90mm	100	100
3743836	5 x 100mm	100	100
3743840	6 x 40mm	100	100
3743842	6 x 50mm	200	200
3743844	6 x 60mm	100	100
3743846	6 x 70mm	100	100
3743848	6 x 80mm	100	100
3743850	6 x 90mm	100	100
3743852	6 x 100mm	100	100

- Solid A302 (A2) stainless steel
- Single thread design
- Pozi drive
- Countersunk head
- Outdoor use
- High resistance to corrosion

Decking screws



Article No.	Description	Pack Quantity	Minimum Order Unit
3743860	4 x 50mm	200	200
3743861	4 x 60mm	200	200
3743862	4 x 70mm	100	100
3743863	5 x 80mm	100	100
3743864	5 x 90mm	100	100

- 1,000 hours salt-spray tested
- Ideal for decking, fencing and exterior applications
- Double countersunk head
- Pozi Drive
- Sharp point, coarse thread
- Green coating to match timber

Wood Screws – round head

Article No.	Imperial gauge & length	Metric gauge & length	Pack Quantity	Minimum Order Unit
3737507	8 x 1	4.0 x 25mm	200	7,200
3737506	8 x 1¼	4.0 x 30mm	200	7,200
3737505	8 x 1½	4.0 x 40mm	200	5,400
3737508	8 x 2	4.0 x 50mm	200	3,600
411008R	8 x 1	4.0 x 25mm	200	6 boxes
411208R	8 x 1¼	4.0 x 30mm	200	6 boxes
411508R	8 x 1½	4.0 x 40mm	200	9 boxes
412008R	8 x 2	4.0 x 50mm	200	6 boxes

- Suitable for wood, plastic and nylon wall plugs
- Through hardened and zinc plated finish
- Sharp gimlet point

Screw fixings

Self Tapping screws



Article No.	Imperial gauge & length	Metric gauge & length	Pack Quantity	Minimum Order Unit
3790211	8 x 1/2	4.0 x 12mm	200	200
3790212	8 x 3/4	4.0 x 15mm	200	200
3790210	8 x 1	4.0 x 25mm	200	200
3790209	8 x 1 1/2	4.0 x 40mm	200	200
41ST0508	8 x 1/2	4.0 x 12mm	200	10 boxes
41ST0708	8 x 3/4	4.0 x 15mm	200	10 boxes
41ST1008	8 x 1	4.0 x 25mm	200	10 boxes
41ST1508	8 x 1 1/2	4.0 x 40mm	200	10 boxes

- Deep thread gives secure grip and easy driving

Carcass screws



Article No.	Description	Pack Quantity	Minimum Order Unit
3746630	4.2 x 32mm	5000	5,000
3746640	4.2 x 45mm	2500	2,500

- Ideal for joining wood to wood in kitchens and shopfitting applications.
- For use in wood, chipboard and MDF materials.
- Pozi countersunk head with a grey phosphate finish

Brass woodscrews

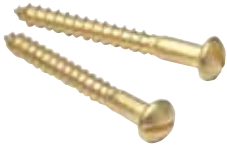


Article No. Recessed	Article No. Slotted	Description	Pack Quantity	Minimum Order Unit
3739026	3701313	4 x 1/2	200	200
3739033	3701337	4 x 5/8	200	200
	3701344	4 x 3/4	200	200
3739057	3701368	4 x 1	200	200
	3701498	6 x 1/2	200	200
3739125	3701513	6 x 3/4	200	200
3739132	3701521	6 x 1	200	200
3739149	3701539	6 x 1 1/4	200	200
3739156	3701547	6 x 1 1/2	200	200
3739194	3701554	7 x 1	200	200
3739200		7 x 1 1/4	200	200
3739255	3701588	8 x 3/4	200	200
3739262	3701596	8 x 1	200	200
3739279	3701604	8 x 1 1/4	200	200
3739286	3701612	8 x 1 1/2	200	200
3739309	3701620	8 x 2	200	200
	3701624	8 x 2 1/2	200	200
3739354	3701638	10 x 1	200	200
3739361	3701642	10 x 1 1/4	200	200
3739378	3701646	10 x 1 1/2	200	200
	3701650	10 x 1 3/4	200	200
3739392	3701653	10 x 2	200	200
3739415	3701661	10 x 2 1/2	100	100
3739422		10 x 3	100	100
	3701669	12 x 1 1/2	200	200
	3701687	12 x 2 1/2	100	100

- Available with slotted or recessed heads
- Manufactured from non-corrosive solid brass with sharp gimlet point
- Suitable for wood, plastic and nylon plugs

Screw fixings

Brass roundhead slotted woodscrews



Article No.	Description	Pack Quantity	Minimum Order Unit
3741029	4 x 1/2	200	200
3741043	4 x 3/4	200	200
3707117	6 x 3/4	200	200
3707124	6 x 1	200	200
3707131	6 x 1 1/4	200	200
3707292	8 x 3/4	200	200
3707308	8 x 1	200	200
3707315	8 x 1 1/4	200	200
3707322	8 x 1 1/2	200	200

- Manufactured from non-corrosive solid brass with sharp gimlet point
- Round head suitable for many plumbing applications
- Single thread design

Brass pan head machine screws

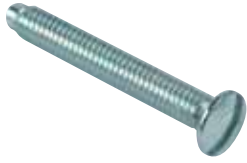


Article No.	Description	Pack Quantity	Minimum Order Unit
3747113	M4 x 6	100	100
3747120	M4 x 8	100	100
3747137	M4 x 10	100	100
3747144	M4 x 12	100	100
3747151	M4 x 16	100	100
3747168	M4 x 20	100	100
3747175	M4 x 25	100	100
3747182	M4 x 30	100	100
3747199	M4 x 35	100	100
3747205	M4 x 40	100	100
3747212	M4 x 50	50	50
3747717	M4 Brass fullnuts	100	100
3747755	M4 Brass washers	100	100
44S4006	4.0 x 6mm Brass	100	1 box
44S4008	4.0 x 8mm Brass	100	1 box
44S4010	4.0 x 10mm Brass	100	1 box
44S4012	4.0 x 12mm Brass	100	1 box
44S4016	4.0 x 16mm Brass	100	1 box
44S4020	4.0 x 20mm Brass	100	1 box
44S4025	4.0 x 25mm Brass	100	1 box
44S4035	4.0 x 35mm Brass	100	1 box
44S4040	4.0 x 40mm Brass	100	1 box
44S4050	4.0 x 50mm Brass	100	1 box
44N4	M4 Nut Brass	100	1 box
44W4	M4 Washer Brass	100	1 box

- Suitable for many electrical installations
- Manufactured from solid brass material

Screw fixings

Raised head machine screws



Article No.	Description	Pack Quantity	Minimum Order Unit
3746130	M3.5 x 25	100	100
3746154	M3.5 x 35	100	100
3746161	M3.5 x 40	100	100
3746178	M3.5 x 50	100	100
3746104	M3.5 x 50 Electroplated brass	100	100
3746192	M3.5 x 75	50	50
3747758	M3.5 x 35 Extension Stud	100	100
44S3525	3.5 x 25mm NI Plated	100	1 box
44S3535	3.5 x 35mm NI Plated	100	1 box
44S3540	3.5 x 40mm NI Plated	100	1 box
44S3550	3.5 x 50mm NI Plated	100	1 box
44S3555	3.5 x 50mm Electro Plated Brass	100	1 box
44S3575	3.5 x 75mm NI Plated	100	1 box

- Suitable for socket boxes, switches etc.
- Bright zinc plated finish

Roofing nuts and bolts



Article No.	Description	Pack Quantity	Minimum Order Unit
3750050	M6 x 12	200	200
3750060	M6 x 16	200	200
3750070	M6 x 20	200	200
3750080	M6 x 25	200	200
3750090	M6 x 30	200	200
3750100	M6 x 40	100	100
3750110	M6 x 50	100	100
44RNB612	M6 x 12mm	200	1 box
44RNB616	M6 x 16mm	200	1 box
44RNB620	M6 x 20mm	200	1 box
44RNB625	M6 x 25mm	200	1 box
44RNB630	M6 x 25mm	200	1 box
44RNB675	M6 x 75mm	200	1 box

- Suitable for many electrical installations
- Double slotted head with square nut
- Bright zinc plated finish

Penny washers

Product Code	Size	Pack Quantity
3750056	M6 x 25 steel zinc plated penny washer	100
3750057	M8 x 25 steel zinc plated penny washer	100
3750058	M10 x 25 steel zinc plated penny washer	100

- Bright zinc plated finish

Screw fixings

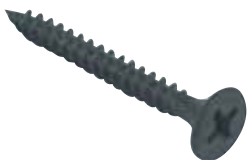
Drywall screws



Article No. Grey Phosphate	Article No. Zinc Plated	Description	Pack Quantity	Minimum Order Unit
Fine thread Grey Phosphate				
3746125		3.5 x 25	1000	1000
3746132		3.5 x 32	1000	1000
3746138		3.5 x 38	1000	1000
3746142		3.5 x 42	1000	1000
3746145		3.5 x 45	1000	1000
3746105		3.5 x 50	500	500
3746155		3.5 x 55	500	500
3746160		3.5 x 60	500	500
3746651		4.2 x 65	500	500
3746751		4.2 x 75	500	500
3746752		4.2 x 100	250	250
	Imperial	Metric		
41DWB3538	6 x 1½	3.5 x 38mm	200	10 boxes
41DWB3545	6 x 1¾	3.5 x 45mm	200	10 boxes
41DWB3550	6 x 2	3.5 x 50mm	200	10 boxes
41DWB3555	6 x 2¼	3.5 x 55mm	200	10 boxes
Fine thread Zinc Plated				
	3745025	3.5 x 25	1000	1000
	3745032	3.5 x 25	1000	1000
	3745032	3.5 x 25	1000	1000
	3745032	3.5 x 42	1000	1000
	3745032	3.5 x 42	1000	1000
	3745050	3.5 x 42	500	500
	3745050	3.5 x 42	500	500
	3745050	3.5 x 42	500	500
	3745050	3.5 x 42	500	500
	3745050	3.5 x 42	500	500
	3745050	3.5 x 42	250	250
Coarse thread Grey Phosphate				
3746308		3.9 x 32mm	1,000	1,000
3746310		3.9 x 35mm	1,000	1,000
3746012		3.9 x 38mm	1,000	1,000
3746314		3.9 x 45mm	1,000	1,000
3746316		3.9 x 50mm	500	500
3746318		3.9 x 55mm	500	500

- Bugle head with Phillips recess, fine thread or coarse
- Available with grey phosphate or zinc plated finish
- Suitable for plasterboard, fibreboard, partitions and suspended ceilings

Self drilling drywall screws



Article No.	Description	Pack Quantity	Minimum Order Unit
3745210	3.5 x 25	1,000	1,000
3745212	3.5 x 32	1,000	1,000
3745214	3.5 x 38	1,000	1,000
3745216	3.5 x 42	1,000	1,000
3745218	3.5 x 50	1,000	1,000
3745230	4.2 x 65	500	500
3745232	4.2 x 75	500	500
3745400	4.2 x 13 wafer head	1,000	1,000
3745405	4.2 x 13 pan head	1,000	1,000

- Self drilling version for heavy duty applications
- Bugle head with Phillips recess

Screw fixings

Collated drywall screws



Article No. Grey Phosphate	Article No. Zinc Plated	Description	Pack Quantity	Minimum Order Unit
3746770	3746900	3.5 x 25 fine	1,000	1,000
3746772	3746902	3.5 x 35 fine	1,000	1,000
3746774		3.9 x 25 coarse	1,000	1,000
3746223		3.9 x 32 coarse	1,000	1,000
3746782	3746906	3.9 x 35 coarse	1,000	1,000
3746784	3746908	3.9 x 41 coarse	1,000	1,000
3746783		3.9 x 45 coarse	1,000	1,000
3746156		3.9 x 50 coarse	1,000	1,000
3746786	3746912	3.9 x 55 coarse	1,000	1,000

- Bugle Head with Phillips recess
- Fits popular makes of collated screw gun
- Thread: coarse - timber; fine - steel

Collated chipboard screws



Article No.	Description	Pack Quantity	Minimum Order Unit
3743907	4 x 30	1,000	1,000
3743909	4 x 40	1,000	1,000
3743920	4 x 50	1,000	1,000

- Through hardened, yellow passivated woodscrews
- Fits popular makes of collated screw gun
- Ideal for speedy fixing of floorboards and sheet materials

Steel to steel self drilling screws



Article No. 16 mm Bonded Washer	Article No. 19 mm Bonded Washer	Description	Maximum Thickness mm	Pack Quantity	Minimum Order Unit
Light section					
3752260	3752261	5.5 x 25 3PT	3.5	100	100
3752265	3752266	5.5 x 32 3PT	3.5	100	100
3752270	3752271	5.5 x 38 3PT	3.5	100	100
3752275	3752276	5.5 x 50 3PT	3.5	100	100
Heavy section					
3752210		5.5 x 22 4PT	12.5	100	100
3752215	3752216	5.5 x 32 5PT	12.5	100	100
3752220	3752221	5.5 x 40 5PT	12.5	100	100
3752225	3752226	5.5 x 60 5PT	12.5	100	100
3752230	3752231	5.5 x 80 5PT	12.5	100	100
3752235	3752236	5.5 x 100 5PT	12.5	100	100

- Hexagon washer headed self drilling screws
- Drills and fastens in one operation
- 5/16" head standard
- Available with 16 and 19mm EDPM bonded washers
- 3mm thick bonding reduces the likelihood of leaks
- High thread screws provide a secure fix through insulation

High thread screws



Article No. 19 mm Bonded Washer	Description	Maximum Thickness mm	Pack Quantity	Minimum Order Unit
3752350	5.5 x 70 3PT	3.5	100	100
3752355	5.5 x 100 3PT	3.5	100	100

Screw fixings

Washerless steel to steel screws



Article No.	Description	Maximum Thickness mm	Pack Quantity	Outer Quantity	Minimum Order Unit
Light section					
3752290	5.5 x 25 3PT	3.5	100	3,300	100
3752292	5.5 x 32 3PT	3.5	100	3,300	100
3752294	5.5 x 38 3PT	3.5	100	3,300	100
3752296	5.5 x 50 3PT	3.5	100	2,400	100
Heavy section					
3752250	5.5 x 22 4PT	12.5	100	3,300	100
3752252	5.5 x 32 5PT	12.5	100	3,300	100
3752254	5.5 x 40 5PT	12.5	100	2,400	100

Loose washers



Article No.	Description	Pack Quantity	Minimum Order Unit
3752380	16mm	100	100
3752382	19mm	100	100

- Reduce the likelihood of leaks
- EDPM bonded

General purpose steel to steel screws



Article No.	Description	Pack Quantity	Minimum Order Unit
3752300	4.8 x 16	100	100

- For heating, ventilation, and ducting applications

Reduced point stitching screws



Article No. 16mm	Article No. 19mm	Description	Pack Quantity	Minimum Order Unit
3752410		6.3 x 25	100	100
	3752411	6.3 x 25	100	100

- Ideal for joining thin metal sheets

Screw fixings

Gash point screws



Article No.	Description	Maximum Thickness mm	Pack Quantity	Minimum Order Unit
3752110	6.3 x 32 16mm	1.5 - 4	50	50
3752111	6.3 x 32 19mm	1.5 - 4	50	50
3752115	6.3 x 45 16mm	1.5 - 4	50	50
3752116	6.3 x 45 19mm	1.5 - 4	50	50

- Ideal for fixing sheet and cladding materials to timber frames, re-roofing, barns etc.
- Washers have 3mm bonding reducing the likelihood of leaks
- 16 or 19mm washers
- 5/16 hex heads

5/16" hex head cover caps



Article No. 16mm	Article No. 19mm	Description	Pack Quantity	Minimum Order Unit
3752057		Merlin grey	100	100
	3752 071	Goosewing grey	100	100
3752054		Vandyke brown	100	100
3752055	3752 075	Olive green	100	100

- Suits all 5/16" Hex head products
- To suit 16 and 19mm bonded washers
- Provides weather protection
- Colour matches roofing material

Magnetic sockets



Article No.	Description	Pack Quantity	Minimum Order Unit
3752000	Hex size 5/16" - 6.3mm Screw Dia	5	5
3752001	Hex size 1/4" - 4.8mm Screw Dia	5	5

- Fits most leading brands of electric screwdrivers

Timber to steel self drilling screws



Article No.	Description	Maximum Thickness mm	Pack Quantity	Minimum Order Unit
Light section				
3752560	5.5 x 40 3PT	1.5 - 4	100	100
3752565	5.5 x 60 3PT	1.5 - 4	100	100
3752570	5.5 x 80 3PT	1.5 - 4	100	100
3752575	5.5 x 100 3PT	1.5 - 4	100	100
3752580	5.5 x 110 3PT	1.5 - 4	100	100
Heavy section				
3752510	5.5 x 50 5PT	12	100	100
3752515	5.5 x 60 5PT	12	100	100
3752520	5.5 x 70 5PT	12	100	100
3752525	5.5 x 85 5PT	12	100	100
3752530	5.5 x 109 5PT	12	100	100

- Wings ream clearance hole to prevent material jacking
- Ribbed head aids self embedment
- Tight clamping action
- Suitable for fixing mezzanine floors, firelining, chipboard, roof and floor sheets to steelwork
- Automotive coachbuilding bodywork application

Screw fixings

Masonry screws



Article No.	Description	Pack Quantity	Minimum Order Unit
Countersunk Phillips head			
3703210	4.8 x 32	100	100
3703215	4.8 x 45	100	100
3703220	4.8 x 57	100	100
3703225	4.8 x 70	100	100
3703230	4.8 x 82	100	100
3703235	4.8 x 100	100	100
3703260	6.3 x 57	100	100
3703265	6.3 x 70	100	100
3703275	6.3 x 100	100	100
3703280	6.3 x 125	100	100
Hexagon head			
3703065	6.3 x 70 Hex size $\frac{5}{16}$	100	100

- Suitable for rapid anchoring directly into most masonry materials
- Available in countersunk or hexagon heads
- Special diameter drills and hexagon driving bits are available
- No wall plug required

Drill bits



Article No.	Description	Pack Quantity	Minimum Order Unit
Masonry drill bits			
1733015A	4.35 x 160	1	1
SDS plus hammer drill bits			
1788905A	4.35 x 160	1	1
1788940A	5.15 x 160	1	1

- Specialist diameter drills suitable for masonry screws

Nails and pins

Plastic headed pins and nails



Article No. Black	Article No. White	Article No. Brown	Description	Pack Quantity	Minimum Order Unit
Plastic headed pins					
3790302	3790303	3790304	1.9 x 25mm	250	250
	3790313	3790314	1.9 x 30mm	250	250
	3790323	3790324	1.9 x 40mm	250	250
Plastic headed nails					
	3790400		3.3 x 40mm	100	100
	3790410	3790411	3.3 x 50mm	100	100
	3790420		3.3 x 65mm	100	100
Cladding pins					
3790500			2.1 x 30mm	250	250

- For use with facias, bargeboards, soffits, cladding and window trims
- Manufactured from A4 stainless steel with a range of coloured polymer heads
- Annular rings offers a high grip factor

Masonry nails



Article No.	Description	Pack Quantity	Minimum Order Unit
Light gauge (2.5mm diameter)			
3790000	25mm	100	100
3790002	30mm	100	100
3790004	35mm	100	100
3790006	40mm	100	100
3790093	45mm	100	100
3790010	50mm	100	100
3790014	60mm	100	100
10AL25	25mm	100	10 boxes
10AL30	30mm	100	10 boxes
10AL35	35mm	100	10 boxes
10AL40	40mm	100	12 boxes
10AL45	45mm	100	12 boxes
10AL50	50mm	100	12 boxes
10AL60	60mm	100	8 boxes
Medium gauge (3mm diameter)			
3790030	25mm	100	100
3790032	30mm	100	100
3790034	35mm	100	100
3790036	40mm	100	100
3790038	45mm	100	100
3790040	50mm	100	100
3790044	60mm	100	100
3790046	65mm	100	100
3790048	70mm	100	100
3790050	75mm	100	100
3790094	80mm	100	100
10AM25	25mm	100	10 boxes
10AM30	30mm	100	10 boxes
10AM35	35mm	100	10 boxes
10AM40	40mm	100	12 boxes
10AM45	45mm	100	12 boxes
10AM50	50mm	100	12 boxes
10AM60	60mm	100	8 boxes
10AM65	65mm	100	8 boxes
10AM70	70mm	100	8 boxes
10AM75	75mm	100	8 boxes
10AM80	80mm	100	10 boxes

- Suitable for fixing into brick, block and concrete
- C1075 grade steel, through hardened to 50-54 HRC and bright zinc plated
- Available in light, medium and heavy gauge
- Zinc plated finish

Nails and pins

Masonry nails continued



Article No.	Description	Pack Quantity	Minimum Order Unit
Heavy gauge (3.5mm diameter)			
3790060	25mm	100	100
3790062	30mm	100	100
3790064	35mm	100	100
3790066	40mm	100	100
3790068	45mm	100	100
3790070	50mm	100	100
3790074	60mm	100	100
3790091	65mm	100	100
3790078	70mm	100	100
3790092	75mm	100	100
3790082	80mm	100	100
3790086	90mm	100	100
3790090	100mm	100	100
10AH25	25mm	100	10 boxes
10AH30	30mm	100	10 boxes
10AH35	35mm	100	10 boxes
10AH40	40mm	100	12 boxes
10AH45	45mm	100	12 boxes
10AH50	50mm	100	12 boxes
10AH60	60mm	100	8 boxes
10AH65	65mm	100	8 boxes
10AH70	70mm	100	8 boxes
10AH75	75mm	100	8 boxes
10AH80	80mm	100	10 boxes
10AH90	90mm	100	10 boxes
10AH100	100mm	100	10 boxes
Capping nails			
3790204	2.5 x 25mm	100	100
3790207	2.5 x 30mm	100	100
3790208	2.5 x 35mm	100	100
12CAP25	2.5mm diameter x 25mm long	100	10 boxes
12CAP30	2.5mm diameter x 30mm long	100	10 boxes
12CAP35	2.5mm diameter x 35mm long	100	10 boxes
Dome head nails			
3743865	2.5 x 18mm	250	
10AR16AE	18mm	250	12 boxes



Rivets

Aluminium domed head steel mandrel rivets



Article No.	Description	Pack Quantity	Minimum Order Unit
3793005	3.2mm dia x 6mm	1,000	1,000
3793006	3.2mm dia x 8mm	1,000	1,000
3793007	3.2mm dia x 10mm	1,000	1,000
3793008	3.2mm dia x 12mm	1,000	1,000
3793010	3.2mm dia x 16mm	1,000	1,000
3793013	4.0mm dia x 10mm	1,000	1,000
3793014	4.0mm dia x 12mm	1,000	1,000
3793015	4.0mm dia x 14mm	1,000	1,000
3793016	4.0mm dia x 16mm	1,000	1,000
3793018	4.0mm dia x 20mm	1,000	1,000
3793019	4.8mm dia x 8mm	1,000	1,000
3793020	4.8mm dia x 10mm	1,000	1,000
3793021	4.8mm dia x 12mm	1,000	1,000
3793022	4.8mm dia x 14mm	1,000	1,000
3793023	4.8mm dia x 16mm	1,000	1,000
3793024	4.8mm dia x 18mm	1,000	1,000
3793025	4.8mm dia x 21mm	1,000	1,000
3793026	4.8mm dia x 24mm	1,000	1,000
3793027	4.8mm dia x 28mm	1,000	1,000

- Most popular head style
- Head forms footprint on outermost sheet for an impeccable finished appearance

Aluminium large head steel mandrel rivets



Article No.	Description	Pack Quantity	Minimum Order Unit
3793050	4.8mm dia x 10mm	500	500
3793051	4.8mm dia x 12mm	500	500
3793052	4.8mm dia x 14mm	500	500
3793053	4.8mm dia x 16mm	500	500
3793054	4.8mm dia x 18mm	500	500
3793055	4.8mm dia x 21mm	500	500
3793056	4.8mm dia x 24mm	500	500

- Large flanged head spreads fixing load
- Excellent for fastening soft and brittle materials
- Large 14mm diameter head

Plated steel domed head steel mandrel rivets



Article No.	Description	Pack Quantity	Minimum Order Unit
3793133	4.8mm dia x 12mm	1,000	1,000
3793134	4.8mm dia x 14mm	1,000	1,000
3793135	4.8mm dia x 16mm	500	500

- Plated steel domed head offers corrosion protection

Cable ties

Cable ties - TCT



Article No.	Description	Pack Quantity	Minimum Order Unit
Natural			
2400026	100 x 2.5	100	100
2400064	150x 3.6	100	100
2400149	200 x 3.6	100	100
2400101	200 x 4.6	100	100
2400123	250 x 4.8	100	100
2400187	300 x 4.8	100	100
2400248	370 x 4.8	100	100
2400286	380 x 7.6	100	100
Black			
2400033	100 x 2.5	100	100
2400071	150 x 3.6	100	100
2400156	200 x 3.6	100	100
2400118	200 x 4.6	100	100
2400124	250 x 4.8	100	100
2400194	300 x 4.8	100	100
2400255	370 x 4.8	100	100
2400293	380 x 7.6	100	100

- Suitable for a wide range of applications including cable harnessing and cable fastening
- Manufactured from either natural or black 6.6 grade nylon

Cable tie plug



Article No.	Description	Pack Quantity	Minimum Order Unit
55CTP640B100	6mm x 40mm (6mm drill)	100	1 box

- A quick and easy way of fixing pipes or cables by means of a cable tie
- Drill a 6mm hole, hammer in the fixing and insert the cable tie

Fixing bands and grommets

Fixing bands



Article No.	Description	Pack Quantity	Minimum Order Unit
Straight edge galvanised - TGB1			
2705110	12 x 0.7 (10m)	1	1
2705310	20 x 0.7 (25m)	1	1
2705320	20 x 1.0 (10m)	1	1
2705410	25 x 1.2 (25m)	1	1
2705420	25 x 2.0 (10m)	1	1
Configuration 8 galvanised - TAG			
2700610	12 x 0.7 (10m)	1	1
2700630	17 x 0.7 (10m)	1	1
2700650	26 x 1.0 (10m)	1	1
Straight edge universal - TUB			
2703015	8 white (10m)	1	1
2703023	8 grey (10m)	1	1
2704013	12 white (10m)	1	1
2704063	12 black (10m)	1	1
2704054	12 orange (10m)	1	1
Configuration 8 plastic coated - TAP			
2700510	12 x 0.7 black (10m)	1	1
2700511	12 x 0.7 white (10m)	1	1
2700513	12 x 0.7 red (10m)	1	1
2700530	17 x 0.7 black (10m)	1	1
2700531	17 x 0.7 white (10m)	1	1
2700533	17 x 0.7 red (10m)	1	1
Configuration 8 copper - TAC			
2700710	12 x 0.9 (10m)	1	1

- All banding is suitable for suspended installations, anchoring etc, in electrical, building, heating and ventilation installations
- Easy to cut and shape

PVC cable grommets



Article No.	Description	Pack Quantity	Minimum Order Unit
Standard type			
3280210	20mm open	100	100
3280215	20mm closed	100	100
3280220	25mm open	50	50
3280225	25mm closed	50	50
Quick fit type			
3280010	20mm open	100	100
3280015	20mm closed	100	100
3280020	25mm open	50	50
3280035	25mm closed	50	50

- Designed to prevent cable chafing through trunking and electrical boxes
- Available in standard and quick fit designs
- Designed to completely seal against dust and water to IP67
- Wide sealing range for each size of product
- Available in Grey EPDM and Black Chloroprene materials

Compression grommets - TET



Article No.	Description	Pack Quantity	Minimum Order Unit
IMT36179	3-5 EPDM	50	50
IMT36180	5-7 EPDM	50	50
IMT37303	7-10 EPDM	50	50
IMT37307	10-14 EPDM	50	50
IMT37311	14-20 EPDM	50	50
IMT37314	20-26 EPDM	25	25
IMT37304	7-10 Chloroprene	50	50
IMT37308	10-14 Chloroprene	50	50

Cable clips

Thorsman cable clips premium - TC



Article No.	Cable Size/Type	Description	Pack Quantity	Minimum Order Unit
Round clips				
2001008	TC2-3 clear	Telephone - 2 pair	100	1,000
2011005	TC3-5 clear	Telephone - 4 pair	100	1,000
2011017	TC3-5 white	Telephone - 4 pair	100	1,000
2011021	TC3-5 grey	Telephone - 4 pair	100	1,000
2022009	TC5-7 clear	2 core flexible	100	1,000
2022010	TC5-7 white	2 core flexible	100	1,000
2022039	TC5-7 grey	2 core flexible	100	1,000
2022029	TC5-7 black	2 core flexible	100	1,000
2032011	TC7-10 white	3 core flexible	100	1,000
2032041	TC7-10 black	Co-ax	100	1,000
2032091	TC7-10 brown	Co-ax	100	1,000
2032061	TC7-10 red	Co-ax	100	1,000
2041200	TC8-12 white	Co-ax	100	1,000
2041259	TC8-12 grey		100	1,000
2042011	TC10-14 white		100	1,000
2042021	TC10-14 grey		100	1,000
2042041	TC10-14 black		100	1,000
2052011	TC14-20 white		100	1,000
2052051	TC14-20 black		100	1,000
2060002	TC18-22 white		50	500
2060135	TC18-22 black		50	500
2070209	TC22-26 white		50	500
2070134	TC22-26 black		50	500

Flat clips

2101004	TC2 x 4 clear	Bell wire	100	1,000
2106003	TC3 x 5 clear	2812X	100	1,000
2111003	TC4 x 6 clear	3219Y	100	1,000
2111029	TC4 x 6 grey	3192Y	100	1,000
2116010	TC5 x 8 white	1 & 1.5mm ² T&E	100	1,000
2116028	TC5 x 8 grey	1 & 1.5mm ² T&E	100	1,000
2126019	TC6 x 10 white	2.5mm ² T&E	100	1,000
2126027	TC6 x 10 grey	2.5mm ² T&E	100	1,000
2131019	TC7 x 14 white	4 & 6mm ² T&E	100	1,000
2131027	TC7 x 14 grey	4 & 6mm ² T&E	100	1,000
2136018	TC9 x 18 white	10 & 16mm ² T&E	100	1,000
2136026	TC9 x 18 grey	10 & 16mm ² T&E	100	1,000
2137014	TC11 x 22 white		100	500

Double flat clips

2141018	TCD 5 x 8 white	2 x 1 & 1.5mm ² T&E	100	1,000
2141026	TCD 5 x 8 grey	2 x 1 & 1.5mm ² T&E	100	1,000
2146017	TCD 6 x 10 white	2 x 2.5mm ² T&E	100	1,000
2146025	TCD 6 x 10 grey	2 x 2.5mm ² T&E	100	1,000



- For use in wood, masonry and compressed board
- Flexible design for use with various cable sizes
- Manufactured from impact resistant polypropylene with a hardened, plated nail
- Full colour printed boxes
- Comprehensive range

Cable clips

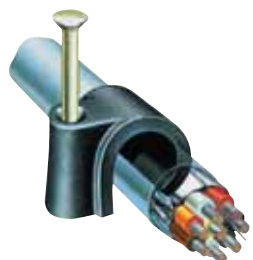
Thorsman cable clips standard - TCA



Article No.	Cable Size/Type	Description	Pack Quantity	Minimum Order Unit
Round clips				
2201000A	TCA 3-5 clear	Telephone - 4 pair	100	1,000
2201001A	TCA 3-5 white	Telephone - 4 pair	100	1,000
2202011A	TCA 5-7 clear	2 core flexible	100	1,000
2202000A	TCA 5-7 white	2 core flexible	100	1,000
2202005A	TCA 5-7 black	2 core flexible	100	1,000
2203000A	TCA 7-9 white	3 core flexible	100	1,000
2203002A	TCA 7-9 black	Co-ax	100	1,000
2203004A	TCA 7-9 brown	Co-ax	100	1,000
2203005A	TCA 7-9 red	Co-ax	100	1,000
2205000A	TCA 10-13 white		100	1,000
2205002A	TCA 10-13 black		100	1,000
2206000A	TCA 14-20 white		100	1,000
2206002A	TCA 14-20 black		100	1,000
Flat clips				
2210000A	TCA2 x 4 clear	Bell wire	100	1,000
2211000A	TCA3 x 5 clear	2812Y	100	1,000
2212000A	TCA4 x 6 clear	3192Y	100	1,000
2213000A	TCA5 x 8 white	1 & 1.5mm ² T&E	100	1,000
2213001A	TCA5 x 8 grey	1 & 1.5mm ² T&E	100	1,000
2214000A	TCA6 x 10 white	2.5mm ² T&E	100	1,000
2214001A	TCA6 x 10 grey	2.5mm ² T&E	100	1,000
2215000A	TCA7 x 14 white	4 & 6mm ² T&E	100	1,000
2215001A	TCA7 x 14 grey	4 & 6mm ² T&E	100	1,000

- For use in wood, masonry and compressed board
- Flexible design for use with various cable sizes
- Manufactured from impact resistant polypropylene with a hardened, plated nail
- Packed in plain white boxes
- Concise range

Tower round plus clips



Product Code	Size	Type	Pack Quantity
77CB04P	4 – 5mm	Black	200
77CW04P	4 – 5mm	White	200
77CB05P	5 – 6mm	Black	100
77CW05P	5 – 6mm	White	100
77CB06P	6 – 7mm	Black	100
77CW06P	6 – 7mm	White	100
77CB07P	7 – 8mm	Black	100
77CW07P	7 – 8mm	White	100
77CB09P	9 – 11mm	Black	100
77CW09P	9 – 11mm	White	100
77CB12PAC	12 – 14mm	Black	100
77CW12PAC	12 – 14mm	White	100
77CB15PAC	15 – 18mm	Black	100
77CW15P	15 – 18mm	White	100
77CB19P	19 – 24mm	Black	50
77CW19P	19 – 24mm	White	50
77CB25P	25 – 28mm	Black	50
77CW25P	25 – 28mm	White	50

- Tower is a comprehensive range of high quality plastic clips to accommodate a wide selection of cable diameters. The hardened steel pins are made from a high carbon steel, heat-treated, then electro zinc plated
- Suitable eye protection must be worn during installation

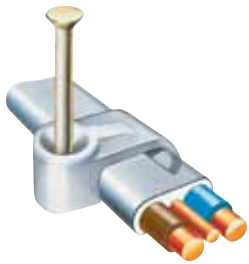
Tower round plus clips - red

Product Code	Size	Type	Pack Quantity
77CR06P	6 - 7mm	Red	100
77CR07P	7 - 8mm	Red	100
77CR09P	9 - 11mm	Red	100

- Ideal for fire and security installations

Cable clips

Tower flat plus clips - twin and earth



Product Code	Size	Type	Pack Quantity
77CGPF1P	1.0/1.5mm ²	6242Y - grey	100
77CGPF25P	2.5mm ²	6242Y - grey	100
77CGPF4P	4.0/6.0mm ²	6242Y - grey	100
77CGPF10P	10.0mm ²	6242Y - grey	50

- Tower Plus Clips feature a return 'hook' that holds cables tightly
- This 'clip with a grip' is ideal for use in computer and communication installations where cables may vary in size
- Plus Clips are manufactured from a specially selected grade of UV stabilised polypropylene which combines strength and elasticity

Tower TV cable and satellite clips



Product Code	Size	Type	Pack Quantity
72CB05P	5 – 6mm	Coaxial cable, black	100
72CT05P	5 – 6mm	Coaxial cable, brown	100
72CW05P	5 – 6mm	Coaxial cable, white	100
72CB06P	6 – 7mm	Coaxial cable, black	100
72CT06P	6 – 7mm	Coaxial cable, brown	100
72CW06P	6 – 7mm	Coaxial cable, white	100
72CB07P	7 – 8mm	Coaxial cable, black	100
72CT07P	7 – 8mm	Coaxial cable, brown	100
72CW07P	7 – 8mm	Coaxial cable, white	100
72CBKF40		Flat clips, black	100
72CBKF60		Flat clips, black	50

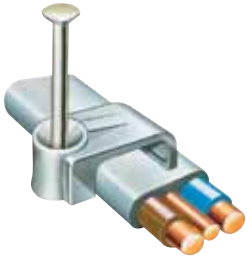
- TV and satellite clips are manufactured from a specially selected grade of UV stabilised polypropylene which combines strength and elasticity

Tower flat clips - parallel twin

Product Code	Size	Type	Pack Quantity
70CWPT		Bell wire, white	100
70CWPM	0.50mm ²	2812X, white	100
70CWSM	0.75mm ²	3192Y, white	100

Cable fixings

Tower flat clips - twin and earth



Product Code	Size	Type	Pack Quantity
70CGKF10	1.0mm ²	6242Y, grey	100
70CGKF15	1.5mm ²	6242Y, grey	100
70CGKF25	2.5mm ²	6242Y, grey	100
70CGKF40	4.0mm ²	6242Y, grey	100
70CGKF60	6.0mm ²	6242Y, grey	100
70CGKF100	10.0mm ²	6242Y, grey	100
70CGKF160	16.0mm ²	6242Y, grey	100

- Supplied with electro-plated hardened steel nail

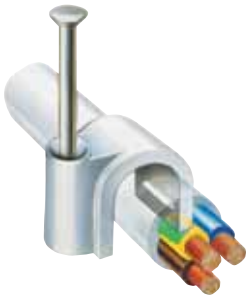
Tower flat clips - three core and earth

Product Code	Size	Type	Pack Quantity
70CG3CE	1.0mm ² and 1.5mm ²	Grey	100

Tower flat clips - double

Product Code	Size	Type	Pack Quantity
70CGDKF15	1.0/1.5mm ²	6242Y, grey	100
70CGDKF25	2.5mm ²	6242Y, grey	100

Tower round clips



Product Code	Size	Type	Pack Quantity
70CWRC275	2.75mm	White	100
70CWRC35	3.5mm	White	100
70CBRC4	4mm	Black	100
70CWRC4	4mm	White	100
70CBRC5	5mm	Black	100
70CWRC5	5mm	White	100
70CBRC6	6mm	Black	100
70CWRC6	6mm	White	100
70CBRC7	7mm	Black	100
70CWRC7	7mm	White	100
70CBRC8	8mm	Black	100
70CWRC8	8mm	White	100
70CBRC9	9mm	Black	100
70CWRC9	9mm	White	100
70CBRC10	10mm	Black	100
70CWRC10	10mm	White	100
70CBRC11	11mm	Black	100
70CWRC11	11mm	White	100
70CBRC12	12mm	Black	100
70CWRC12	12mm	White	100
70CBRC14	14mm	Black	50
70CWRC14	14mm	White	50
70CBRC16	16mm	Black	50
70CWRC16	16mm	White	50

- Designated sizes to match cable diameter

Cable and pipe fixings

Pin plug for cable clips



Product Code	Description	Pack Quantity
55PP1	Grey, 20mm length (5mm drill)	100

- The pin plug provides the ideal fixing in situations where the substrate is too hard to take a masonry nail or cable clip
- Drill a 5mm hole and tap in the pin plug

Low smoke and fume clips and saddles



Product Code	Size	Colour	Pack Quantity
Clips			
64LSF26R	6.5-6.9mm dia	Red	50
64LSF26W	6.5-6.9mm dia	White	50
64LSF28R	7.0-7.4mm dia	Red	50
64LSF28W	7.0-7.4mm dia	White	50
64LSF30R	7.5-7.9mm dia	Red	50
64LSF30W	7.5-7.9mm dia	White	50
64LSF32R	8.0-8.4mm dia	Red	50
64LSF32W	8.0-8.4mm dia	White	50
64LSF34R	8.5-9.2mm dia	Red	50
64LSF34W	8.5-9.2mm dia	White	50
64LSF37R	9.3-10.0mm dia	Red	50
64LSF37W	9.3-10.0mm dia	White	50
64LSF40R	10.1-10.7mm dia	Red	50
64LSF40W	10.1-10.7mm dia	White	50
64LSF43R	10.8-11.7mm dia	Red	50
64LSF43W	10.8-11.7mm dia	White	50
Saddles			
64LSF272R	6.3-6.9mm dia	Red	50
64LSF272W	6.3-6.9mm dia	White	50
64LSF302R	7.0-7.7mm dia	Red	50
64LSF342R	7.8-9.0mm dia	Red	50
64LSF342W	7.8-9.0mm dia	White	50



Clips for soft skin fire performance cables

- Copper clips with LSF coating - complies to: BS 476. Part 6, BS 476. Part 7, BS 6853, BS 4066, UL 94 Vertical Burn Test

Self adhesive clips



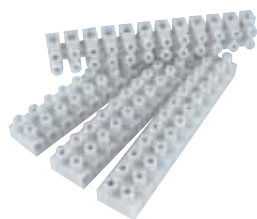
Product Code	Size	Pack Quantity
Standard clips		
65SA04W	Up to 4mm diameter	25
65SA08W	Up to 8mm diameter	25
65SA12W	Up to 12mm diameter	25
Cable tie carrier		
65CT05B	Maximum width of cable tie - 5mm	25
65CT10B	Maximum width of cable tie - 10mm	25



- The ideal cable fixing where a nail-in application would be impossible or unacceptable

Connectors, earth clamps and Ezyerth

Terminal connectors



Article No.	Description	Pack Quantity	Minimum Order Unit
Brass Insert			
3000254	2.5 amp	10 Strips	1 Pack
3000270	5 amp	10 Strips	1 Pack
3000288	15 amp	10 Strips	1 Pack
3000296	30 amp	10 Strips	1 Pack
3000938	60 amp	5 Strips	1 Pack
Steel Insert			
3000410	2.5 amp white	10 Strips	1 Pack
3000420	5 amp white	10 Strips	1 Pack
3000430	15 amp white	10 Strips	1 Pack
3000440	30 amp white	10 Strips	1 Pack

- Manufactured from self extinguishing rigid white polypropylene
- CE approved for use in working temperatures up to 85°C

Chocbox



In-Line connector
(connector not included)



Data/Telecom

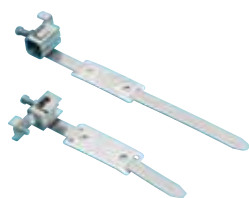


Junction box

Product Code	Size	Pack Quantity	Minimum Order Unit
CHOCBOXTH	Standard	200	200
Maximum capacities:			
Connector Size	With Cordgrip	Without Cordgrip	
2 amp	8 pole	10 pole	
5 amp	6 pole	8 pole	
15 amp	4 pole	4 pole	
30 amp	3 pole	3pole	

- The revolutionary connector cover that is safe and simple to use
- The solution to protecting and insulating electrical connections
- CHOCBOX is a connector cover (2 amp-30amp), a junction box (fixed wiring) and a conduit box
- Tested to BS EN60598-1 (13.3.2), 850°C glow-wire

Earth clamps



Article No.	Description	Pack Quantity	Minimum Order Unit
3000952	ECL15 Wet or dry use	20	20
3000956	ECL14 Dry use	20	20
3000959	EC16 Wet use	20	20
3000965	EC14/2 (200m) Dry use	20	20
3000969	EC15/2 (200m) Wet or dry use	20	20
3000971	EC15/3 (300m) Wet or dry use	20	20
21RCK10	Ezyerth Standard Clamp Kit	10	1 Pack

- Available to suit wet or dry conditions and a range of pipe diameters
- Designed to comply with BS951
- Manufactured with a brass or phosphor bronze body with phosphor bronze strap

Tapes

PVC insulation tape



Article No.	Description	Pack Quantity	Minimum Order Unit
2420100	19mm x 20mtr red	8	8
2420101	19mm x 20mtr yellow	8	8
2420102	19mm x 20mtr blue	8	8
2420103	19mm x 20mtr black	8	8
2420104	19mm x 20mtr white	8	8
2420105	19mm x 20mtr yel/grn	8	8
2420106	19mm x 20mtr green	8	8
2420107	19mm x 20mtr brown	8	8
2420108	19mm x 20mtr grey	8	8
2420110	19mm x 33mtr red	8	8
2420111	19mm x 33mtr yellow	8	8
2420112	19mm x 33mtr blue	8	8
2420113	19mm x 33mtr black	8	8
2420114	19mm x 33mtr white	8	8
2420115	19mm x 33mtr yell/grn	8	8
2420116	19mm x 33mtr brown	8	8
2420117	19mm x 33mtr green	8	8
2420118	19mm x 33mtr grey	8	8
2420200	25mm x 33mtr red	6	6
2420201	25mm x 33mtr yellow	6	6
2420202	25mm x 33mtr blue	6	6
2420203	25mm x 33mtr black	6	6
2420204	25mm x 33mtr white	6	6
2420205	25mm x 33mtr yell/grn	6	6
2420300	50mm x 33mtr red	3	3
2420301	50mm x 33mtr yellow	3	3
2420302	50mm x 33mtr blue	3	3
2420303	50mm x 33mtr black	3	3
2420304	50mm x 33mtr white	3	3

- Manufactured from flame retardant self extinguishing PVC to BS EN 60454
- Suitable for electrical insulation, binding, colour coding and general work
- Available in a range of sizes and colours

Specialist tapes



Article No.	Description	Pack Quantity	Minimum Order Unit	Outer Quantity
Self amalgamating tape				
2423000	19mm x 10mtr black	1	1	48
2423100	25mm x 10mtr black	1	1	36
Gaffer tape				
2424000	50mm x 50mtr silver gaffer tape	1	1	24
2424004	50mm x 50mtr black gaffer tape	1	1	24
Ducting tape				
2424005	50mm x 50mtr silver waterproof duct tape	1	1	24
Anti corrosion tape				
2425000	50mm x 10mtr	1	1	36
Underground Warning Tape				
25EC365	150mm x 365mtr Yellow	1	10	10

- Specialist electrical tapes for extreme weather conditions
- Ducting tape available for general purpose sealing and binding or heating and ventilation uses
- Self amalgamating for protection against corrosion and providing watertight seals
- Gaffer tape, general purpose cloth tape for sealing and protecting
- Anti-corrosion tape suitable for protecting pipes etc. in various corrosive environments and below ground



Cable handling

PVC sleeving



Product Code	Colour	Pack Quantity
27GY2	Green/yellow 2mm	100mtr
27GY3	Green/yellow 3mm	100mtr
27GY4	Green/yellow 4mm	100mtr
27GY5	Green/yellow 5mm	100mtr
27GY6	Green/yellow 6mm	100mtr
27BN3	Brown 3mm	100mtr
27BN4	Brown 4mm	100mtr
27BU3	Blue 3mm	100mtr
27BU4	Blue 4mm	100mtr

- Sleeving is supplied in non-shrink PVC and is self extinguishing
- Earth sleeving is striped green/yellow

Cable tidy poly packs (with applicator)



Before



After

Product Code	Description	Colour	Pack Quantity
28CTBP15	15mm	Black	2.5mtr
28CTBP15W	15mm	White	2.5mtr
28CTBP20	20mm	Black	2.5mtr
28CTBP20W	20mm	White	2.5mtr

The Cable Tidy tidies muddled cables in seconds. Simply feed the wires, hoses, cables or pipes into the applicator, feed the Cable Tidy harness wrap over the applicator and it's fitted in seconds. There are no sharp edges, and it is totally reusable, and can be cut to exact lengths with no wastage.

- Whether in the home or office, the jumble of cable from computers, telephones, televisions and entertainment systems can be unsightly and dangerous. Cable Tidy changes that
- Cable Tidy is a revolutionary system that literally “zips” cables into place in seconds
- By using a simple applicator tool the Cable Tidy gathers together all potentially hazardous cabling
- What's more you can add further cables along the whole length of this clever device, and when it's not needed, Cable Tidy can be quickly removed and stored for use at a later date

Hand tools

Torque Vario-S VDE screwdriver set



Article No.	Description	Pack Quantity	Minimum Order Unit
1773863	Torque Screwdriver plus Setting Tool & 7 blades Kit contains - TorqueVario-S VDE Screwdriver 1.0 - 5.0 Nm Toque setting tool VDE Slotted Blade 3.5mm VDE Slotted Blade 4mm VDE Slotted Blade 5.5mm VDE POZI Blade PZ1 VDE POZI Blade PZ2 VDE Phillips Blade PH1 VDE Phillips Blade PH2 Calibration certificate	1	1

- Ensure that electricians comply to 17th Edition regulation 134.1.1. which states that the manufacturer's requirements are to be met. This includes complying with the torque settings of the terminal screws.
- Simply adjust to the correct setting, choose the screwdriver tip and then tighten until it clicks.
- Slim blades to allow access to terminal connectors

Optime electrical hand tools



Article No.	Description	Pack Quantity	Minimum Order Unit
VDE insulated softgrip pliers - TVP			
1773839A	160mm VDE Combination	1	1
1773840A	180mm VDE Combination	1	1
1773841A	200mm VDE Combination	1	1
1773842A	200mm VDE Snipe Nose	1	1
1773845A	160mm VDE Wire Stripping	1	1
1773846A	160mm VDE Snipe Nose	1	1
1773850A	160mm VDE Diagonal Cutters	1	1
1773851A	180mm VDE Diagonal Cutters	1	1
1773855A	160mm VDE Cable Shears	1	1
VDE insulated softgrip screwdrivers - TVS			
1773831A	2.5mm x 75mm slotted	1	1
1773832A	4mm x 100mm slotted	1	1
1773833A	5.5mm x 125mm slotted	1	1
1773834A	6.5mm x 100mm slotted	1	1
1773835A	PZ1 x 80mm	1	1
1773836A	PZ2 x 100mm	1	1

- A range of VDE hand tools
- For professional use and approved to the highest standards
- VDE approved, tested to 10,000V, suitable for 1000 volt applications

Hand tools

Re-threading tools



Article No.	Description	Pack Quantity	Minimum Order Unit
3310010	M3.5 thread	1	1
3310015	M4.0 thread	1	1
08RT35	3.5mm thread	1	1 ea

- Re-threading tool suitable for switch sockets and conduit boxes

General electrician's tools



Article No.	Description	Pack Quantity	Minimum Order Unit
08CS1	Co-ax Stripper	1	1 ea
08HDCC520	Heavy Duty Cable Cutter 520mm	1	1 ea
08FW20FH	Nylon Fish wire draw tape 20mtr	1	1 ea

Crimping tools



Article No.	Description	Pack Quantity	Minimum Order Unit
1774900A	190mm Terminal Crimping Tool	1	1
08CRIMPKIT	Crimp Tool Connector Kit	1	1 pk

- For most popular sizes for insulated terminals
- Heavy duty construction

Tool sets



Article No.	Description	Pack Quantity	Minimum Order Unit
General purpose tool sets			
1773158	37 piece socket and screwdriver bit set	1	1
1773502	7 piece soft grip screwdriver set	1	1
Electrical tool sets			
1773600	6 pc economy 1000V VDE screwdriver set	1	1
1773157	10 pc economy electricians tool set	1	1
1773830A	3 Piece VDE Plier/Cutter Set	1	1
1173308A	15 Piece VDE Plier & Screwdriver Set	1	1
1773862A	7 Piece VDE Screwdriver Set		

Hammers



Article No.	Description	Pack Quantity	Minimum Order Unit
1773103A	1 Piece Forged Hammer 20oz	1	1
1773104A	1 Piece Forged Hammer 16oz	1	1

- High quality forged and polished heads

Hand tools

Tape measures



Article No.	Description	Pack Quantity	Minimum Order Unit
1773189A	Merchandiser of 12 x 7.5m	1	1 ea
1773320A	Merchandiser of 12 x 10m	1	1 ea
1773356A	Merchandiser of 12 x 5m	1	1 ea

- For most popular sizes for insulated terminals
- Heavy duty construction

Knives



Article No.	Description	Pack Quantity	Minimum Order Unit
1773211A	Merchandiser of 36 x Trimming knives	36	1
1773214A	Merchandiser of 12 Softgrip Knives	12	1
1773221	Retractable Knife Blades	100	100

- Trimming knife has die cast case
- Soft grip knife has anti-slip rubber grip and rigid PVC holster

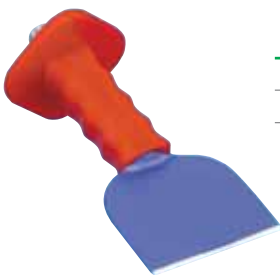
Saws, hacksaws and blades



Article No.	Description	Pack Quantity	Minimum Order Unit
Hacksaw frames - THS			
3306901A	300mm/12" Hacksaw	1	1
3306008A	257mm/6" Mini Hacksaw	1	1
Hacksaw blades			
3300134A	24T 12" (Pack of 10)	10	1
3300159A	32T 12" Bi-Metal (Pack of 10)	10	1
3305000A	257mm/6" Mini (Pack of 10)	10	1
Saws			
1774350	22" Hardpoint saw 7t/8pt	1	1
3301010	Drywall Saw (Merchandiser - 12pc)	1	1

- Spare blades stored in frame
- Blades suitable for cutting a wide range of metals and plastic
- Suitable for plaster board

Chisels



Article No.	Description	Pack Quantity	Minimum Order Unit
1773121	Bolster chisel with grip 4"	1	1
1773122	Bolster chisel 2 1/4"	1	1

- Chisels have soft grip handles

Hand tools

Optime cable tacker and staples



Article No.	Description	Pack Quantity	Minimum Order Unit
IMT70000	Professional Cable Tacker	1	1
IMT70001	45/10mm galvanised staples	5000	5000
IMT70002	60/10mm galvanised staples	5000	5000
IMT70003	45/10mm white staples	5000	5000

The Professional's choice for fastening low voltage telephone and alarm cable.

- Lightweight -
- Super comfort ABS handle
- Staples neatly into corners
- Safe and easy to load

Plumbing tools



Article No.	Description	Pack Quantity	Minimum Order Unit
Wrenches & spanners			
1774716A	250mm/10" Adjustable Wrench	1	1
1773126	9 pce Hexagonal key set	1	1
Pipe cutters			
1773125	Heavy duty plastic pipe cutter 6-35mm	1	1

Fixing cases and trade tubs

Thorsman trade tubs



Article No.	Description	Pack Quantity	Minimum Order Unit
1776020	No.1 400 brown plugs & 10x2" screws	8	8
1776015	No.2 500 red plugs & 8x1 1/2" screws	8	8
1776112	No.9 400 1/1.5mm ² & 2.5mm ² T&E Clips Grey	4	4
1776111	No.11 200 Cavity fixings & screws	4	4
1776200	No.12 500 4 x 60mm green decking screws	8	8
1776014	No.13 500 4x40mm & 250 5x50mm universal screws	8	8

- An excellent range of screws, plugs, fixings and clips in durable, re-sealable tub with carry handle
- Quality fixings
- Superb Value

Tower trade tubs



Product Code	Size	Pack Quantity	Minimum Order Unit
05TUB01	2" x 10 Screw & Brown Plugs	400pc	1
05TUB02	1½" x 8 Screw & Red Plugs	500pc	1
05TUB03	Towerfix Cavity Fixing	200pc	1
05TUB04	1.0/1.5 & 2.5 Grey KF Cable Clips	400pc	1
05TUB05	1.0/1.5 & 2.5 Grey Plus Cable Clips	400pc	1

- A range of popular fixings in transparent plastic tubs, each with resealable lid and handy carry handle

Fixing cases



Article No.	Description	Pack Quantity	Minimum Order Unit
1775900	300 x 220 x 66 single deck multi compartment	1	1
1775901	440 x 330 x 66 single deck multi compartment	1	1
1775909	Chipboard Fixings case - filled	1	1
1775911	Twinpack Fixings case	1	1
1773960	A5 Plastic Fixings case	1	1
1773962	A4 Plastic Fixings case	1	1
1775930	Mini plastic Fixings case - filled	1	1
1775940	TSC5 Sorta case	1	1
73SBOX	10 Compartment Storage Box	1	1 Pack

- Designed for the builder or electrician
- Robust construction
- Multi-purpose

Safety equipment

Head protection



Article No.	Description	Pack Quantity	Minimum Order Unit
1771682	Safety helmet - white	1	1
1771684	Safety helmet - yellow	1	1
1771686	Safety helmet - blue	1	1

- High quality range provides safety for all tradesman
- Tested to meet all current standards including CE, BS, and EN requirements

Respiratory protection



Article No.	Description	Pack Quantity	Minimum Order Unit
1771725	10 Hygiene Masks	1	1
1771727	Fibre Mask (Pack of 2)	2	1
1771798	P2 cartridge Pack	1	1

Eye protection



Article No.	Description	Pack Quantity	Minimum Order Unit
1771750	Safety goggle	1	1
1771755	Safety spectacle	1	1

Hearing protection



Article No.	Description	Pack Quantity	Minimum Order Unit
1771809	Foam ear plugs (10 prs)	10 pairs	1

Hand protection



Article No.	Description	Pack Quantity	Minimum Order Unit
1771811	Standard rigger gloves	1	1
1771813	Heavy duty rigger gloves	1	1
1771817	Criss cross gripper gloves	1	1

General items

Article No.	Description	Pack Quantity	Minimum Order Unit
1771640	Disposable overall	1	1
1771819	Hi-visibility waistcoat	1	1

Site power

Site power



Article No.	Description	Pack Quantity	Minimum Order Unit
TT15KVA	1.5kVA 240/110V transformer	1	1
TT30KVA	3/3.3kVA 240/110V transformer	1	1
TTS3W	3 way inline splitter	1	1
TTS4W	110V 4 way splitter box	1	1

- Portable power transformer for use with 110V equipment
- Suitable for use with power tools and site lights
- Allows up to four tools or lights or combinations of both to be run from a single power source

Cable reels, trailing leads



Article No.	Description	Pack Quantity	Minimum Order Unit
Trailing leads			
4502105	14M 16A lead set 110V 1.5mm ²	1	1
4503107	14M 16A lead set 110V 2.5mm ²	1	1
Cable reel cut-out range			
4510080	10M 13A cable reel - cassette 4 sockets - cut out	1	1
4510090	10M 10A cable reel - cassette 2 sockets - cut out	1	6
4510092	25M 13A cable reel - open 2 sockets - cut out	1	1
4510094	40M 13A cable reel - open 2 sockets - cut out	1	1
4510096	50M 13A cable reel - open 2 sockets - cut out	1	1
4510093	25M 16A/110V cable reel - open 2 sockets - cut out	1	1
4510095	40M 16A/110V cable reel - open 2 sockets - cut out	1	1

- Heavy duty industrial quality polypropylene construction
- Tested to comply with BS EN61242 & BS1363
- Wide range of cable lengths and ratings available
- CE approved

Worklights

Worklights



Article No.	Description	Pack Quantity	Minimum Order Unit
1775420G2	Goliath G250 55W 240V light	1	1
1775421G2	Goliath G250 Plus 55W 240V light	1	1
1775421G2B	Goliath G250 Plus 55W 240V light with battery	1	1
1775422G2	Goliath G250 Pro 55W 110V light	1	1
1775422G2B	Goliath G250 Pro 55W 110V light with battery	1	1
1775423G2	Thorsman 55W Light 110V G2	1	1
4507240	Goliath Tripod	1	1
1775440	Goliath replacement tube 55W	1	1
1171065	Flexlight torch inc. batteries	1	1
LIGHTSTIK2	Lightstik - Handheld LED Lamp	1	1
LSCHARGER	Lightstik Charger	1	1

- Lens and case are virtually shatterproof
- Low power consumption compared with halogen/LCD
- Light remains cool avoiding possible fire hazard
- Sealed to IP rating against dust and moisture
- Goliath tripod available finished in yellow for increased visibility
- Boosters available for recharge and directly power site lighting from a 12V car/van power supply
- The lightweight LIGHTSTIK2 inspection light incorporates rechargeable Li-ion battery technology, providing a brighter light and longer battery shelf life. It is water and oil resistant to IP65

Power tool accessories

Screwdriver bits



Article No.	Description	Pack Quantity	Minimum Order Unit
1772417	Magnetic Screw Guide 120mm	1	1
1772418A	7pc Bit set inc Bit Holder	1	1
1772112	Grabit Damaged Screw Remover	1	1

- Supplied in Slotted, Phillips, Torx and Pozi
- Prepacked for POS display

Standard masonry drill bits - TBE



Article No.	Description	Pack Quantity	Minimum Order Unit
1721018A	4 x 75mm	1	10
1722016A	5 x 85mm	1	10
1723014A	5.5 x 85mm	1	10
1724012A	6 x 100mm	1	10
1724920A	6.5 x 100mm	1	10
1726017A	7 x 100mm	1	10
1727015A	8 x 120mm	1	10
1729011A	10 x 120mm	1	10
1733013A	12 x 150mm	1	10
1732090A	14 x 150mm	1	5
1740000A	16 x 150mm	1	5
1733502A	8 pc set (case) drill	1	1

- Suitable for drilling a wide range of masonry materials, including concrete, brick and stone
- For use in rotary and percussion machines
- High quality tungsten carbide tip

SDS plus drill long series



Article No.	Description	Pack Quantity	Minimum Order Unit
1789515A	20 x 1000	1	1

Power tool accessories

Long series masonry bits - TBL



Article No.	Description	Pack Quantity	Minimum Order Unit
1733021A	5.5 x 150mm	1	5
1733039A	6 x 150mm	1	5
1733942A	6.5 x 150mm	1	5
1733047A	7 x 150mm	1	5
1733054A	8 x 150mm	1	5
1733062A	10 x 150mm	1	5
1733056A	8 x 200mm	1	5
1733064A	10 x 200mm	1	5
1733070A	10 x 400mm	1	1
1733401A	16 x 400mm	1	1

- For use in a wide range of masonry materials, including concrete, brick and stone
- Range of lengths to suit specific requirements

SDS plus chisels

Article No.	Description	Pack Quantity	Minimum Order Unit
1773106A	20 x 250mm	1	1
1773107A	40 x 250mm	1	1
1773109A	chasing gauge 22mm wide	1	1

Hammer SDS plus bit -THB



Article No.	Description	Pack Quantity	Minimum Order Unit
1788868A	4 x 110	1	1
1788926A	5 x 110	1	1
1788934A	5 x 160	1	1
1788975A	5.5 x 110	1	1
1788989A	5.5 x 160	1	1
1789023A	6 x 110	1	1
1789016A	6 x 160	1	1
1789028A	6.5 x 110	1	1
1789030A	6.5 x 160	1	1
1789052A	7 x 110	1	1
1789054A	7 x 160	1	1
1789080A	8 x 110	1	1
1789108A	8 x 160	1	1
1789116A	8 x 210	1	1
1789120A	8 x 260	1	1
1789153A	10 x 160	1	1
1789165A	10 x 210	1	1
1789195A	10 x 450	1	1
1789252A	12 x 160	1	1
1789272A	12 x 210	1	1
1789304A	12 x 250	1	1
1789312A	12 x 300	1	1
1789319A	12 x 450	1	1
1789323A	12 x 600	1	1
1789350A	14 x 150	1	1
1789352A	14 x 200	1	1
1789403A	14 x 250	1	1
1789410A	14 x 450	1	1
1789414A	14 x 600	1	1
1789440A	16 x 150	1	1

- For use in concrete, brick, stone and rock
- Suitable for Electro-Pneumatic rotary hammer machines with an SDS fitting

Power tool accessories

Hammer SDS plus bit - continued



Article No.	Description	Pack Quantity	Minimum Order Unit
1789455A	16 x 300	1	1
1789470A	16 x 450	1	1
1789481A	16 x 600	1	1
1789485A	18 x 450	1	1
1789500A	20 x 450	1	1
1789510A	20 x 600	1	1
1789520A	22 x 450	1	1
1789570A	25 x 450	1	1
1789572	25 x 250	1	1
1789202A	10 x 600	1	1
1773105A	5pc set	1	1

- For use in concrete, brick, stone and rock
- Suitable for Electro-Pneumatic rotary hammer machines with an SDS fitting

High speed steel rolled flute - tube packed



Article No.	Description	Pack Quantity	Minimum Order Unit
Imperial			
1800 032A	3/32"	10	10
1800 049A	7/64"	10	10
1800 056A	1/8"	10	10
1800 063A	9/64"	10	10
1800 094A	3/16"	10	10
1800 131A	1/4"	10	10
1800 216A	3/8"	5	5
Metric			
1800414A	1.0mm	10	10
1800421A	1.5mm	10	10
1800438A	2.0mm	10	10
1800445A	2.5mm	10	10
1800452A	3.0mm	10	10
1800456A	3.3mm	10	10
1800469A	3.5mm	10	10
1800476A	4.0mm	10	10
1800483A	4.5mm	10	10
1800490A	5.0mm	10	10
1800506A	5.5mm	10	10
1800513A	6.0mm	10	10
1800520A	6.5mm	10	10
1800537A	7.0mm	10	10
1800544A	7.5mm	10	10
1800568A	8.0mm	10	10
1800575A	8.5mm	10	10
1800582A	9.0mm	5	5
1800599A	9.5mm	5	5
1800605A	10.0mm	5	5
1800612A	10.5mm	5	5
1800629A	11.0mm	5	5
1800643A	12.0mm	5	5
1800667A	13.0mm	5	5

- Suitable for metal, wood, plastic and steel
- Comprehensive range available in metric and imperial sizes
- Packed in plastic tubes

Power tool accessories

Imperial jobber drill



Article No.	Description	Pack Quantity	Minimum Order Unit
1800305A	1/8"	10	10
1800308A	3/16"	10	10
1800309A	3/32"	10	10

High speed steel rolled flute long series



Article No.	Description	Pack Quantity	Minimum Order Unit
1800455A	3.0 x 100mm	1	10
1800472A	3.5 x 110mm	1	10
1800479A	4.0 x 119mm	1	10

- Suitable for metal, wood, plastic and steel
- Comprehensive range available

High speed steel rolled flute drill sets



Article No.	Description	Pack Quantity	Minimum Order Unit
HSS cassettes			
1800927A	13pc Imp. 1/16" – 1/4"	1	1
1800926A	13pc Metric 1.5 - 6.5mm	1	1
1800929A	19pc Metric 1-10mm	1	1

- Suitable for metal, wood, plastic and steel
- Comprehensive range available in metric and imperial sizes

High speed steel ground flute drills long series



Article No.	Description	Pack Quantity	Minimum Order Unit
Metric			
1800701A	1.5mm	10	10
1800704A	2.0mm	10	10
1800707A	2.5mm	10	10
1800710A	3.0mm	10	10
1800712A	3.2mm	10	10
1800715A	3.5mm	10	10
1800720A	4.0mm	10	10
1800723A	4.5mm	10	10
1800726A	5.0mm	10	10
1800731A	5.5mm	10	10
1800733A	6.0mm	10	10
1800735A	6.5mm	10	10
1800739A	8.0mm	10	10
1800743A	10.0mm	5	5

- Highest quality, ground from solid high speed steel
- Ideal for drilling where extra reach is required

Power tool accessories

High speed steel ground flute long series



Article No.	Description	Pack Quantity	Minimum Order Unit
1800801A	3.0mm	1	10
1800802A	3.5mm	1	10
1800803A	4.0mm	1	10
1800805A	5.0mm	1	10
1800810A	8.0mm	1	10
1800811A	10.0mm	1	10

- Highest quality, ground from solid high speed steel
- Ideal for drilling where extra reach is required

Auger bits



Article No.	Description	Length	Pack Quantity	Minimum Order Unit
Hexagonal shank				
1801120A	13mm dia	200mm	1	1
1801125A	16mm dia	200mm	1	1
1801130A	19mm dia	200mm	1	1
1801140A	22mm dia	200mm	1	1
1801150A	25mm dia	200mm	1	1
1801160A	32mm dia	200mm	1	1
SDS plus shank				
1806060A	19mm dia	200mm	1	1
1806070A	22mm dia	200mm	1	1
1806080A	25mm dia	200mm	1	1

- Suitable for drilling deep holes in hardwood, softwood, plywood, MDF etc.

Flat bits



Article No.	Description	Length	Pack Quantity	Minimum Order Unit
1801590A	13mm dia	160mm	1	1
1801619A	16mm dia	160mm	1	1
1801810A	19mm dia	160mm	1	1
1801626A	20mm dia	160mm	1	1
1801633A	22mm dia	160mm	1	1
1801640A	25mm dia	160mm	1	1
1801660A	32mm dia	160mm	1	1
1801680A	38mm dia	160mm	1	1
1802650A	6 Piece Set - (10, 13, 16, 19, 22, 25mm)		1	1

- Manufactured from high quality carbon steel
- Suitable for use in hand and power tools

Step and taper drills



Article No.	Description	Length	Pack Quantity	Minimum Order Unit
Step drills				
3310205A	No. 2 (9 diameters)	4 - 20mm	1	1
3310210A	No. 3 (14 diameters)	4 - 30mm	1	1
Taper drills				
3310105	No. 2	5 - 20mm	1	1
3310110	No. 3	16 - 30.5mm	1	1

- Each drill will cut a variety of hole diameters in many materials
- Manufactured from ground high speed steel
- Non-slip point produces its own pilot hole

Power tool accessories

Holesaws



Article No.	Description	Pack Quantity	Minimum Order Unit
3314010	16mm	1	1
3314030	20mm	1	1
3314040	22mm	1	1
3314050	25mm	1	1
3314070	32mm	1	1
3312090	38mm	1	1
3312100	40mm	1	1
3312110	44mm	1	1
3314120	51mm	1	1
3312130	57mm	1	1
3312199	60mm	1	1
3312140	64mm	1	1
3312198	67mm	1	1
3312150	70mm	1	1
3312196	73mm	1	1
3312160	76mm	1	1
3312195	79mm	1	1
3312197	83mm	1	1
3312194	86mm	1	1
3312193	89mm	1	1
3312192	92mm	1	1
3312191	95mm	1	1
3312180	102mm	1	1
3312189	105mm	1	1
3312187	111mm	1	1
3312186	114mm	1	1
3312184	127mm	1	1
3312181	152mm	1	1
3311910	Electricians Holesaw Kit Contains 20mm, 25mm, 32mm, 38mm, 51mm and 64mm holesaws. Also contains A1 and A2 Arbors	1	1

- Suitable for cutting a large variety of hole diameters in many different materials
- Variable pitch tooth design
- Arbors and accessories available
- Industry standard fitting
- Kits contain 6 holesaws and 2 arbors

Arbors



Article No.	Description	Pack Quantity	Minimum Order Unit
3314300	A1 arbor (14-30mm holesaws $\frac{3}{8}$ " hex)	1	1
3314310	A2 arbor (32-152mm holesaws $\frac{7}{16}$ " hex)	1	1
3314320	A10 arbor (32-152mm holesaws $\frac{3}{8}$ " hex)	1	1
3314308	SDS + arbor (14-30mm holesaws)	1	1
3313004	Pilot drill 1 (for A1, A2 & A10 arbors 82mm)	1	1
3313011	Pilot drill 2 (for A4 arbor 107mm)	1	1

- Interchangeable with all major brands

Power tool and pipe accessories

Electricians box sinker



Article No.	Description	Pack Quantity	Minimum Order Unit
3310165	Quadcut single box sinker kit	1	1
3310170	6mm pilot drill	1	1
3310180	Quadcut double box cutter only	1	1

- Quick and accurate fitting of metal back boxes
- Ideal for either single or double boxes
- Pre-drills the fixing hole
- Suitable for block or masonry

Diamond blades and cores



Article No.	Description	Pack Quantity	Minimum Order Unit
Diamond cores			
3310405	Dry diamond core drill 38 x 165	1	1
3310410	Dry diamond core drill 48 x 165	1	1
3310420	Dry diamond core drill 52 x 165	1	1
3310425	Dry diamond core drill 65 x 165	1	1
3310430	Dry diamond core drill 107 x 165	1	1
3310435	Dry diamond core drill 117 x 165	1	1
3310440	Dry diamond core drill 127 x 165	1	1
3310445	Dry diamond core drill 152 x 165	1	1
3310450	3 jaw chuck adaptor 1/2" hex	1	1
3310460	SDS + chuck adaptor 1/2" hex	1	1
3310150	Extension piece 250mm	1	1
3310155	Pilot drill 200mm	1	1
3310160	Drift key suitable for all adaptors	1	1

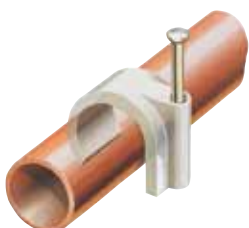
- General Purpose Blades
- Suitable for cutting most bricks, blocks, tiles and concrete
- Highest quality steel, alloy segment and diamond
- Cores produce clean, accurate holes quickly
- High cutting speed
- Hard wearing extended life diamond segments
- Range of accessories available

Pipe clips and spacers



Article No.	Description	Pack Quantity	Minimum Order Unit
4304018	15mm Single Open	100	100
4304025	22mm Single Open	100	100
4304032	28mm Single Open	100	100
4304019	15mm Double Open	100	100
4304026	22mm Double Open	100	100
4301010	15mm Single Hinged	100	100
4301015	22mm Single Hinged	100	100
4301020	28mm Single Hinged	100	100
4301040	15mm Double Hinged	100	100
4301045	22mm Double Hinged	100	100
4301100	Microbore 8-10mm nail-in clips	100	100
4301115	12mm nail-in clips	100	100
2053015	15mm nail-in clips	100	100
78PCW10AC	10mm Nail-in pipe clips - Nail 29mm - Colour white	100	10 Boxes

- Snap on type
- Screw fixed
- Interlocking facility enables joining of hinged clips
- Manufactured from polypropylene
- Can withstand temperatures of 80°C
- Spacers provide additional stand off distance from the wall for insulation materials
- Available for a wide range of heating pipe diameters



Pipe trunking

Pipe trunking - type TRL

Article No.	Description	Pack Quantity	Minimum Order Unit	
5320100	56 x 30mm Pipe Cover	25m (10 lengths)	25m	<ul style="list-style-type: none"> • Cover designed to suit both plumbing and electrical installations • Base clamps with ties fixes the pipe or cable • Cover snaps into place reducing risk of damage
5320210	76 x 40mm Pipe Cover	25m (10 lengths)	25m	
5322010	56mm Clamps & Ties	50	50	
5322160	56mm Joint Junction	100	100	
5322110	56mm Stop End	100	100	
5322020	76mm Clamps & Ties	50	50	
5322180	76mm Joint Junction	100	100	
5322130	76mm Stop End	100	100	

Electrical testing

Test meters



DM10

Product Code	Description	Pack Quantity
DM10	Electrical test meter 10mm display	1
EUROET111	Electrical test meter	1

- **DM10**
DC volts - 1mV to 500V
- AC volts 1V to 500V
- DC current - 0.1mA to 200mA
- Resistance - 1ohm to 2000ohm
- **ET111**
Tests for circuit continuity

Detectors



EURO WPP123



EURO WPS115

Product Code	Description	Pack Quantity
EUROWPP123	Wire, pipe and power detector	1
EUROWPS115	Wire, pipe and stud detector	1
EUROJS103	Joint and stud detector	1
EUROPD107	Power detector	1

- Avoids drilling or cutting into unseen hazards in walls, floors and ceilings
- Electronically senses through walls, floors and ceilings
- **EUROPD107**
Detects presence of mains electricity without contact with cable

Power testers



EURO PT112

Product Code	Description	Pack Quantity
EUROPT112	Power tester	1
EUROCT113	Circuit tester	1
EUROETP116	Electrical test probe	1

- Detects live wires
- Fault finding on sockets, light switches, power tools etc
- 4 unique functions: circuit continuity test, contact power test for 110, 240 and 415V AC, automatic polarity test (+ or -) on battery powered circuits, power test for 3-30VDC

Electrical testing

Multi testers



EURO MC101



EURO BB110

Product Code	Description	Pack Quantity
EUROMC101	Multi-check tester	1
EUROBB110	Battery, bulb and fuse tester	1

- Features 7 major test functions: battery test, bulb test, fuse test, circuit test, appliance test, DC voltage test and AC power test

- Instantly checks all batteries, bulbs and fuses including standard, alkaline or re-chargable batteries and miniature cells, car fuses and bulbs etc

Damp testers



EURO DTM118

Product Code	Description	Pack Quantity
EURODTM118	Damp test meter	1
EURODD105	Damp detector	1

- Electronically determines levels of dampness

- Helps locate and trace sources of moisture in timber, concrete, plaster etc

- Detachable test probe enables readings to be taken from inaccessible areas

- Fixed sensor pins

- Measures the extent of the dampness

Index

Product Code	Page No.	Product Code	Page No.	Product Code	Page No.	Product Code	Page No.	Product Code	Page No.
05TUB01	43	1208016	7	1520302	10	1773962	43	1800456A	49
05TUB02	43	1208057	7	1520303	10	1774350	41	1800469A	49
05TUB03	43	1208060	7	1520304	10	1774716A	42	1800472A	50
05TUB04	43	1220010	6	1721018A	47	1774900A	40	1800476A	49
05TUB05	43	1220104	6	1722016A	47	1775112	47	1800479A	50
08CRIMPKIT	40	1220120	6	1723014A	47	1775420G2	46	1800483A	49
08CS1	40	1240001	7	1724012A	47	1775421G2	46	1800490A	49
08FW20FH	40	1248004	7	1724920A	47	1775421G2B	46	1800506A	49
08HDCC520	40	1249002	7	1726017A	47	1775422G2	46	1800513A	49
08RT35	40	1260025	7	1727015A	47	1775422G2B	46	1800520A	49
1001007	5	1260066	7	1729011A	47	1775423G2	46	1800537A	49
1003003	5	1260108	7	1732090A	47	1775440	46	1800544A	49
1005008	5	1260124	7	1733013A	47	1775900	43	1800568A	49
1006006	5	1260130	7	1733015A	25	1775901	43	1800575A	49
1007004	5	1260140	7	1733021A	48	1775909	43	1800582A	49
1060030	6	1260165	7	1733039A	48	1775911	43	1800599A	49
1060040	6	1265040	7	1733047A	48	1775930	43	1800605A	49
1060050	6	12CAP25	27	1733054A	48	1775940	43	1800612A	49
1060060	6	12CAP30	27	1733056A	48	1776014	43	1800629A	49
1060070	6	12CAP35	27	1733062A	48	1776015	43	1800643A	49
1060080	6	1501035	10	1733064A	48	1776020	43	1800667A	49
1090600	5	1501040	10	1733070A	48	1776111	43	1800701A	50
1090605	5	1501050	10	1733401A	48	1776112	43	1800704A	50
1090610	5	1501500	10	1733502A	47	1776200	43	1800707A	50
1090615	5	1501506	10	1733942A	48	1788868A	48	1800710A	50
1090720	5	1501510	10	1740000A	47	1788905A	25	1800712A	50
1090725	5	1501520	10	1771640	44	1788926A	48	1800715A	50
10AH25	27	1501526	10	1771682	44	1788934A	48	1800720A	50
10AH30	27	1501530	10	1771684	44	1788940A	25	1800723A	50
10AH35	27	1501540	10	1771686	44	1788975A	48	1800726A	50
10AH40	27	1501546	10	1771725	44	1788989A	48	1800731A	50
10AH45	27	1501550	10	1771727	44	1789016A	48	1800733A	50
10AH50	27	1501556	10	1771750	44	1789023A	48	1800735A	50
10AH60	27	1501560	10	1771755	44	1789028A	48	1800739A	50
10AH65	27	1501566	10	1771798	44	1789030A	48	1800743A	50
10AH70	27	1501570	10	1771809	44	1789052A	48	1800801A	51
10AH75	27	1501610	6	1771811	44	1789054A	48	1800802A	51
10AH80	27	1501615	6	1771813	44	1789080A	48	1800803A	51
10AH90	27	1501630	6	1771817	44	1789108A	48	1800805A	51
10AH100	27	1501635	6	1771819	44	1789116A	48	1800810A	51
10AL25	26	1501640	6	1772417	47	1789120A	48	1800811A	51
10AL30	26	1501645	6	1772418A	47	1789153A	48	1800926A	50
10AL35	26	1501650	6	1773103A	40	1789165A	48	1800927A	50
10AL40	26	1511000	12	1773104A	40	1789195A	48	1800929A	50
10AL45	26	1511003	12	1773105A	49	1789202A	49	1801120A	51
10AL50	26	1511004	12	1773106A	48	1789252A	48	1801125A	51
10AL60	26	1511006	12	1773107A	48	1789272A	48	1801130A	51
10AM25	26	1511009	12	1773109A	48	1789304A	48	1801140A	51
10AM30	26	1511012	12	1773121	41	1789312A	48	1801150A	51
10AM35	26	1511015	12	1773122	41	1789319A	48	1801160A	51
10AM40	26	1511018	12	1773125	42	1789323A	48	1801590A	51
10AM45	26	1511021	12	1773126	42	1789350A	48	1801619A	51
10AM50	26	1511022	12	1773128	44	1789352A	48	1801626A	51
10AM60	26	1511024	12	1773157	40	1789403A	48	1801633A	51
10AM65	26	1511027	12	1773158	40	1789410A	48	1801640A	51
10AM70	26	1511031	12	1773189A	41	1789414A	48	1801660A	51
10AM75	26	1511034	12	1773211A	41	1789440A	48	1801680A	51
10AM80	26	1511100	12	1773214A	41	1789455A	49	1801810A	51
10AR16AE	27	1511103	12	1773221	41	1789470A	49	1802650A	51
1130110	5	1511106	12	1773308A	40	1789481A	49	1806060A	51
1130115	5	1511108	12	1773320A	41	1789485A	49	1806070A	51
1130120	5	1511109	12	1773356A	41	1789500A	49	1806080A	51
1130155	5	1511110	12	1773502	40	1789510A	49	2001008	31
1130160	5	1511112	12	1773600	40	1789515A	47	2011005	31
1130165	5	1511115	12	1773830A	40	1789520A	49	2011017	31
1130170	5	1511118	12	1773831A	39	1789570A	49	2011021	31
1130175	5	1511120	12	1773832A	39	1789572	49	2022009	31
1131110	5	1511124	12	1773833A	39	1800032A	49	2022010	31
1131115	5	1511126	12	1773834A	39	1800049A	49	2022029	31
1131130	5	1511200	12	1773835A	39	1800056A	49	2022039	31
1131135	5	1511203	12	1773836A	39	1800063A	49	2032011	31
1131140	5	1511206	12	1773839A	39	1800094A	49	2032041	31
1131145	5	1511209	12	1773840A	39	1800131A	49	2032061	31
1131160	5	1511224	12	1773841A	39	1800216A	49	2032091	31
1131165	5	1511230	12	1773842A	39	1800305A	50	2041200	31
1131170	5	1511231	12	1773845A	39	1800308A	50	2041259	31
1131175	5	1511234	12	1773846A	39	1800309A	50	2042011	31
1131180	5	1511237	12	1773850A	39	1800414A	49	2042021	31
1171065	46	1520002	8	1773851A	39	1800421A	49	2042041	31
1200005	7	1520005	8	1773855A	39	1800438A	49	2052011	31
1200203	7	1520030	8	1773862A	40	1800445A	49	2052051	31
1200401	7	1520060	8	1773863	39	1800452A	49	2053015	53
1200443	7	1520200	8	1773960	43	1800455A	50	2060002	31

Index

Product Code	Page No.	Product Code	Page No.	Product Code	Page No.	Product Code	Page No.	Product Code	Page No.
2060135	31	2420300	37	3310015	40	3703220	25	3739354	18
2070134	31	2420301	37	3310105A	51	3703225	25	3739361	18
2070209	31	2420302	37	3310110A	51	3703230	25	3739378	18
2101004	31	2420303	37	3310150	53	3703235	25	3739392	18
2106003	31	2420304	37	3310155	53	3703260	25	3739415	18
2111003	31	2423000	37	3310160	53	3703265	25	3739422	18
2111029	31	2423100	37	3310165	52	3703275	25	3740026	15
2116010	31	2424000	37	3310170	52	3703280	25	3740088	15
2116028	31	2424004	37	3310180	53	3707117	19	3740095	15
2126019	31	2424005	37	3310205A	51	3707124	19	3740101	15
2126027	31	2425000	37	3310210A	51	3707131	19	3740118	15
2131019	31	25EC365	37	3310405	53	3707292	19	3740125	15
2131027	31	2700510	30	3310410	53	3707308	19	3740132	15
2136018	31	2700511	30	3310420	53	3707315	19	3740137	15
2136026	31	2700513	30	3310425	53	3707322	19	3740140	15
2137014	31	2700530	30	3310430	53	3719172	13	3740141	15
2141018	31	2700531	30	3310435	53	3719196	13	3740142	15
2141026	31	2700533	30	3310440	53	3719219	13	3740143	15
2146017	31	2700610	30	3310445	53	3719226	13	3740144	15
2146025	31	2700630	30	3310450	53	3719240	13	3740145	15
21RCK10	36	2700650	30	3310460	53	3719301	13	3740146	15
2201000A	32	2700710	30	3311910	52	3719318	13	3740148	15
2201001A	32	2703015	30	3312090	52	3719325	13	3740151	15
2202000A	32	2703023	30	3312100	52	3719349	13	3740152	15
2202005A	32	2704013	30	3312110	52	3719363	13	3740153	15
2202011A	32	2704054	30	3312130	52	3719387	13	3740158	15
2203000A	32	2704063	30	3312140	52	3719400	13	3740179	15
2203002A	32	2705110	30	3312150	52	3719417	13	3740187	15
2203004A	32	2705310	30	3312160	52	3719424	13	3740194	15
2203005A	32	2705320	30	3312180	52	3719431	13	3740197	15
2205000A	32	2705410	30	3312181	52	3719455	13	3740198	15
2205002A	32	2705420	30	3312184	52	3719509	13	3741029	19
2206000A	32	27BN3	38	3312186	52	3719516	13	3741043	19
2206002A	32	27BN4	38	3312187	52	3719523	13	3742026	15
2210000A	32	27BU3	38	3312189	52	3719530	13	3742033	15
2211000A	32	27BU4	38	3312191	52	3719547	13	3742037	15
2212000A	32	27GY2	38	3312192	52	3719554	13	3742040	15
2213000A	32	27GY3	38	3312193	52	3719561	13	3742057	15
2213001A	32	27GY4	38	3312194	52	3719585	13	3742064	15
2214000A	32	27GY5	38	3312195	52	3736025	13	3742088	15
2214001A	32	27GY6	38	3312196	52	3736032	13	3742095	15
2215000A	32	2810109	10	3312197	52	3736049	13	3742098	15
2215001A	32	2810125	10	3312198	52	3736056	13	3742101	15
2400026	29	2810141	10	3312199	52	3736070	13	3742118	15
2400033	29	2810166	10	3313004	52	3736087	13	3742125	15
2400064	29	2810182	10	3313011	52	3736117	13	3742127	15
2400071	29	2810901	10	3314010	52	3736124	13	3742132	15
2400101	29	2810927	10	3314030	52	3736179	13	3742170	15
2400118	29	2810943	10	3314040	52	3736209	13	3742171	15
2400123	29	28CTBP15	38	3314050	52	3736278	13	3742187	15
2400124	29	28CTBP15W	38	3314070	52	3736353	13	3742194	15
2400149	29	28CTBP20	38	3314120	52	3736377	13	3742200	15
2400156	29	28CTBP20W	38	3314300	52	3736391	13	3742209	15
2400187	29	3000254	36	3314308	52	3736476	13	3742217	15
2400194	29	3000270	36	3314310	52	3736483	13	3742224	15
2400248	29	3000288	36	3314320	52	3736506	13	3742231	15
2400255	29	3000296	36	3701313	18	3736513	13	3742240	15
2400286	29	3000410	36	3701337	18	3736520	13	3742247	15
2400293	29	3000420	36	3701344	18	3736537	13	3742255	15
2420100	37	3000430	36	3701368	18	3736544	13	3742262	15
2420101	37	3000440	36	3701498	18	3736551	13	3742279	15
2420102	37	3000938	36	3701513	18	3736568	13	3742280	15
2420103	37	3000952	36	3701521	18	3737500	14	3742286	15
2420104	37	3000956	36	3701539	18	3737502	14	3742293	15
2420105	37	3000959	36	3701547	18	3737503	14	3742309	15
2420106	37	3000965	36	3701554	18	3737505	17	3742323	15
2420107	37	3000969	36	3701588	18	3737506	17	3742330	15
2420108	37	3000971	36	3701596	18	3737507	17	3742347	15
2420110	37	3280010	30	3701604	18	3737508	17	3742351	15
2420111	37	3280015	30	3701612	18	3739026	18	3742354	15
2420112	37	3280020	30	3701620	18	3739033	18	3742361	15
2420113	37	3280035	30	3701624	18	3739057	18	3742378	15
2420114	37	3280210	30	3701638	18	3739125	18	3742381	15
2420115	37	3280215	30	3701642	18	3739132	18	3742385	15
2420116	37	3280220	30	3701646	18	3739149	18	3742392	15
2420117	37	3280225	30	3701650	18	3739156	18	3742408	15
2420118	37	3300134A	41	3701653	18	3739194	18	3742415	15
2420200	37	3300159A	41	3701661	18	3739200	18	3742422	15
2420201	37	3301010	41	3701669	18	3739255	18	3742446	15
2420202	37	3305000A	41	3701687	18	3739262	18	3742453	15
2420203	37	3306008A	41	3703065	25	3739279	18	3742477	15
2420204	37	3306901A	41	3703210	25	3739286	18	3742484	15
2420205	37	3310010	40	3703215	25	3739309	18	3742491	15

Index

Product Code	Page No.	Product Code	Page No.	Product Code	Page No.	Product Code	Page No.	Product Code	Page No.
3742507	15	3746130	20	3752110	24	3790211	18	41ST1008	18
3742514	15	3746132	21	3752111	24	3790212	18	41ST1508	18
3742521	15	3746138	21	3752115	24	3790302	26	4301010	53
3743180	16	3746142	21	3752116	24	3790303	26	4301015	53
3743182	16	3746145	21	3752210	22	3790304	26	4301020	53
3743183	16	3746154	20	3752215	22	3790313	26	4301040	53
3743184	16	3746155	21	3752216	22	3790314	26	4301045	53
3743185	16	3746156	22	3752220	22	3790323	26	4301100	53
3743187	16	3746160	21	3752221	22	3790324	26	4301115	53
3743188	16	3746161	20	3752225	22	3790400	26	4304018	53
3743190	16	3746178	20	3752226	22	3790410	26	4304019	53
3743191	16	3746192	20	3752230	22	3790420	26	4304025	53
3743192	16	3746308	21	3752231	22	3790500	26	4304026	53
3743193	16	3746310	21	3752235	22	3793005	28	4304032	53
3743194	16	3746314	21	3752236	22	3793006	28	44N4	19
3743195	16	3746316	21	3752250	23	3793007	28	44RNB612	20
3743207	16	3746318	21	3752252	23	3793008	28	44RNB616	20
3743215	16	3746630	18	3752254	23	3793010	28	44RNB620	20
3743220	16	3746640	18	3752260	22	3793013	28	44RNB625	20
3743222	16	3746651	21	3752261	22	3793014	28	44RNB630	20
3743337	16	3746751	21	3752265	22	3793015	28	44RNB675	20
3743344	16	3746752	21	3752266	22	3793016	28	44S3525	20
3743351	16	3746770	22	3752270	22	3793018	28	44S3535	20
3743360	16	3746772	22	3752271	22	3793019	28	44S3540	20
3743365	16	3746774	22	3752275	22	3793020	28	44S3550	20
3743366	16	3746782	22	3752276	22	3793021	28	44S3555	20
3743367	16	3746783	22	3752290	23	3793022	28	44S3575	20
3743368	16	3746784	22	3752292	23	3793023	28	44S4006	19
3743800	17	3746786	22	3752294	23	3793024	28	44S4008	19
3743802	17	3746900	22	3752296	23	3793025	28	44S4010	19
3743804	17	3746902	22	3752300	23	3793026	28	44S4012	19
3743806	17	3746906	22	3752350	22	3793027	28	44S4016	19
3743808	17	3746908	22	3752355	22	3793050	28	44S4020	19
3743810	17	3746912	22	3752380	23	3793051	28	44S4025	19
3743820	17	3746920	22	3752382	23	3793052	28	44S4035	19
3743822	17	3747113	19	3752410	23	3793053	28	44S4040	19
3743824	17	3747120	19	3752411	23	3793054	28	44S4050	19
3743826	17	3747137	19	3752510	24	3793055	28	44W4	19
3743828	17	3747144	19	3752515	24	3793056	28	4502105	45
3743830	17	3747151	19	3752520	24	3793133	28	4503107	45
3743832	17	3747168	19	3752525	24	3793134	28	4507240	46
3743834	17	3747175	19	3752530	24	3793135	28	4510080	45
3743836	17	3747182	19	3752560	24	410506	14	4510090	45
3743840	17	3747199	19	3752565	24	410508	14	4510092	45
3743842	17	3747205	19	3752570	24	410706	14	4510093	45
3743844	17	3747212	19	3752575	24	410708	14	4510094	45
3743846	17	3747717	19	3752580	24	411006	14	4510095	45
3743848	17	3747755	19	3790000	26	411008	14	4510096	45
3743850	17	3747758	20	3790002	26	411008R	17	49TFM100	6
3743852	17	3748120	16	3790004	26	411010	14	5100011	54
3743860	17	3748127	16	3790006	26	411012	14	5102017	54
3743861	17	3748134	16	3790010	26	411206	14	5107008	54
3743862	17	3748137	16	3790014	26	411208	14	5320100	54
3743863	17	3748141	16	3790030	26	411208R	17	5320210	54
3743864	17	3748158	16	3790032	26	411210	14	5322010	54
3743865	27	3748226	16	3790034	26	411506	14	5322020	54
3743907	22	3748229	16	3790036	26	411508	14	5322110	54
3743909	22	3748233	16	3790038	26	411508R	17	5322130	54
3745025	21	3748240	16	3790040	26	411510	14	5322160	54
3745032	21	3748257	16	3790044	26	411512	14	5322180	54
3745038	21	3748264	16	3790046	26	411708	14	55CTP640B100	29
3745042	21	3748271	16	3790048	26	411710	14	55PP1	35
3745045	21	3748325	16	3790050	26	412006	14	64LSF26R	35
3745050	21	3748349	16	3790060	27	412008	14	64LSF26W	35
3745055	21	3748356	16	3790062	27	412008R	17	64LSF272R	35
3745060	21	3748370	16	3790064	27	412010	14	64LSF272W	35
3745065	21	3750050	20	3790066	27	412012	14	64LSF28R	35
3745066	21	3750056	20	3790068	27	412508	14	64LSF28W	35
3745075	21	3750057	20	3790070	27	412510	14	64LSF302R	35
3745210	21	3750058	20	3790074	27	412512	14	64LSF30R	35
3745212	21	3750060	20	3790078	27	413008	14	64LSF30W	35
3745214	21	3750070	20	3790082	27	413010	14	64LSF32R	35
3745216	21	3750080	20	3790086	27	413012	14	64LSF32W	35
3745218	21	3750090	20	3790090	27	413510	14	64LSF342R	35
3745223	22	3750100	20	3790091	27	414010	14	64LSF342W	35
3745230	21	3750110	20	3790092	27	414012	14	64LSF34R	35
3745232	21	3752000	24	3790093	26	415808	14	64LSF34W	35
3745400	21	3752001	24	3790094	26	41DWB3538	21	64LSF37R	35
3745405	21	3752054	24	3790204	27	41DWB3545	21	64LSF37W	35
3746012	21	3752055	24	3790207	27	41DWB3550	21	64LSF40R	35
3746104	20	3752057	24	3790208	27	41DWB3555	21	64LSF40W	35
3746105	21	3752071	24	3790209	18	41ST0508	18	64LSF43R	35
3746125	21	3752075	24	3790210	18	41ST0708	18	64LSF43W	35

Index

Product Code	Page No.
65CT05B	35
65CT10B	35
65SA04W	35
65SA08W	35
65SA12W	35
69FILL12	9
69FIRE12	9
69SEAL12	9
69SEALC12	9
70CBRC10	34
70CBRC11	34
70CBRC12	34
70CBRC14	34
70CBRC16	34
70CBRC4	34
70CBRC5	34
70CBRC6	34
70CBRC7	34
70CBRC8	34
70CBRC9	34
70CG3CE	34
70CGDKF15	34
70CGDKF25	34
70CGKF10	34
70CGKF100	34
70CGKF15	34
70CGKF160	34
70CGKF25	34
70CGKF40	34
70CGKF60	34
70CWPM	33
70CWPT	33
70CWRC4	34
70CWRC5	34
70CWRC6	34
70CWRC7	34
70CWRC8	34
70CWRC9	34
70CWRC10	34
70CWRC11	34
70CWRC12	34
70CWRC14	34
70CWRC16	34
70CWRC35	34
70CWRC275	34
70CWSM	33
72CB05P	33
72CB06P	33
72CB07P	33
72CBKF40	33
72CBKF60	33
72CT05P	33
72CT06P	33
72CT07P	33
72CW05P	33
72CW06P	33
72CW07P	33
73SBOX	43
77CB04P	32
77CB05P	32
77CB06P	32
77CB07P	32
77CB09P	32
77CB12PAC	32
77CB15PAC	32
77CB19P	32
77CB25P	32
77CGPF1P	33
77CGPF4P	33
77CGPF10P	33
77CGPF25P	33
77CR06P	32
77CR07P	32
77CR09P	32
77CW04P	32
77CW05P	32
77CW06P	32
77CW07P	32
77CW09P	32
77CW12PAC	32
77CW15P	32
77CW19P	32
77CW25P	32

Product Code	Page No.
78PCW10AC	53
CHOCBOXTH	36
DM10	55
EUROBB110	57
EUROCT113	55
EURODD105	57
EURODTM118	57
EUROET111	55
EUROETP116	55
EUROJS103	55
EUROMC101	57
EUROPD107	57
EUROPT112	55
EUROWPP123	55
EUROWPS115	55
IMT36179	30
IMT36180	30
IMT37303	30
IMT37304	30
IMT37307	30
IMT37308	30
IMT37311	30
IMT37314	30
IMT38005	11
IMT38006	11
IMT38007	11
IMT38008	11
IMT38009	11
IMT38010	11
IMT38011	11
IMT38012	11
IMT38013	11
IMT38014	11
IMT38015	11
IMT38016	11
IMT38017	11
IMT38018	11
IMT38019	11
IMT38020	11
IMT38021	11
IMT38022	11
IMT38023	11
IMT38024	11
IMT38025	11
IMT38026	11
IMT70000	42
IMT70001	42
IMT70002	42
IMT70003	42
LIGHTSTIK2	46
LSCHARGER	46
TT15KVA	45
TT30KVA	45
TTS3W	45
TTS4W	45
EURODD105	57



UK contact details -

0870 608 8 608

Fax 0870 608 8 606

Ireland contact details -

01 601 2200

Fax 01 601 2201

As a global specialist in energy management with operations in more than 100 countries, Schneider Electric offers integrated solutions across multiple market segments, including leadership positions in energy and infrastructure, industrial processes, building automation, and data centres/networks, as well as a broad presence in residential applications.

Focused on making energy safe, reliable, and efficient, the company's 110,000 plus employees achieved sales of 19.6 billion euros in 2010, through an active commitment to help individuals and organisations "Make the most of their energy."

We are changing our brand names and becoming one Schneider Electric. You'll get the same great quality products, but from one name you can remember and trust. This provides you and your customers with the reassurance associated with Schneider Electric.

Some of our market leading brands have already become Schneider Electric including **Merlin Gerin, Telemecanique, Square D, GET, Mita, Sarel, Himel, Thorsman, Tower** and **TAC**.

Working as one Schneider Electric makes it clearer that our ranges are highly compatible for integrated solutions.

Schneider Electric Ltd

United Kingdom
Stafford Park 5,
Telford
Shropshire
TF3 3BL
Tel: 0870 608 8 608
Fax: 0870 608 8 606
www.schneider-electric.com/uk

Ireland
Head office,
Block a
Maynooth Business Campus
Maynooth, Co. Kildare
Tel: (01) 601 2200
Fax: (01) 601 2201
www.schneider-electric.com/ie

Schneider Electric Limited is a company registered in England and Wales.
Registered number: 1407228. Registered office: Stafford Park 5, Telford, Shropshire TF3 3BL.

© 2011 Schneider Electric. All Rights Reserved. Schneider Electric, Active Energy Management, Compact, EcoStruxure, ION Enterprise, iRIO, Make the most of your energy, Masterpact, Micrologic, Power Plant To Plug, Modbus, and PowerLogic are owned by Schneider Electric Industries SAS, or its affiliated companies in the United States and other countries. 998-3432.

As standards, specifications and designs change from time to time, please ask for confirmation of the information given in this publication.

member of

